



Australian Government

**National Emergency
Management Agency**

National Emergency Management Stockpile Standing Offer Panel

Goods and Service Catalogue





Current as at 26 August 2025

Table of Contents

Introduction	4
Overview of the NEMS Capability	4
What is the role of the NEMS Panel?	4
Customer Benefits	5
Panel access	5
Categories in the NEMS Panel	6
Single Use Goods	10
Sandbags	10
Other (Temporary) Flood Mitigation Barriers	10
Body Bags	14
Non-Medical Biohazard Kits	17
Synthetic Pit Linings (Animal carcasses)	19
Other Goods	20
High Output Generators and Fuel Storage	20
Ultra High and High Volume Dewatering (Flood) Pumps	30
Mobile Mortuary Equipment	32
Shelter & Camp Solutions	33
Emergency Shelter Camps – Semi Rigid	33
Emergency Shelter Camps – Soft Shelter (Tents)	35
Ancillary & Independent Equipment for Emergency Shelter Camps	39
Potable Drinking Water	39
Ablution Facilities	41
Laundry Facilities	42
Relocatable Storage Solutions	43
Emergency Responses & Associated services	45
Emergency Response Logistics and Specialist Humanitarian Services	45
Enhanced Supply Chain Services	46
Engineering and Technical Services	47
Other Services	48
Warehousing & Logistics	50
Warehousing of Goods purchased through the NEMS Panel and Other Goods & Associated Services ..	50
Warehousing Suppliers & Services	52
Transportation & Freight of Goods purchased through the NEMS Panel	54
Bundled Goods & Services	55
Appendix A – List of Suppliers & Descriptions	56



Current as at 26 August 2025

Anywise Consulting 56

Aspen Medical 57

Bluemont..... 58

C3 Systems 60

CE Bartlett 61

Coates Hire..... 62

DomeShelter..... 63

Energy LogistiX..... 64

Fire System Supplies..... 65

GenPlus Hire 66

Global Defence Solutions (GDS)..... 67

Hannagan Solutions 68

Humanihut 69

KB Logistics 70

Krisis Protection..... 71

Linfox 72

McGloin Baker 72

Midmed 73

OPEC Systems 74

Pipe Management Australia..... 75

Proton Dynamics 76

RedR Australia..... 77

Respond Global..... 78

Simon Transport 79

Spearpoint Solutions & Technology 80

Toll Remote Logistics 81

Ventia..... 82

Westlab..... 83



Current as at 26 August 2025

Introduction

Overview of the NEMS Capability

The National Emergency Management Agency (NEMA) has established an ongoing NEMS capability to enhance the Australian Government's ability to better support the states and territories during a crisis.

The NEMS capability consists of:

- A national stockpile of Australian Government-owned disaster goods, including a seasonal strategic reserve of single-use consumables;
 - Including a system for the management of the stockpiled goods;
- A standing offer panel to facilitate the purchase of critical goods and services to support state and territory government responses to crises;
 - This includes a pool of disaster management specialists and non-government owned equipment which can be contracted to be available in higher risk weather season;
- Strategic partnerships with other Australian Government humanitarian and crisis response capabilities.

What is the role of the NEMS Panel?

The NEMS Panel has been set up to enable the efficient purchase of goods and services to create and replenish a stockpile of Commonwealth-owned disaster response and relief goods and services.

The NEMS Panel supports prevention and preparedness activities, through facilitating the purchase of emergency management goods and services that are ready to deploy in the event of a disaster. The NEMS Panel is accessible to authorised Australian Government, state and territory and local government agencies.

The NEMS Panel uses an often-open approach which allows NEMA to go back to industry – at any time over the life of the Panel – to tender for new or different products and services and enable new or existing entrants to the market to apply for a position on the Panel.

This Panel makes responding to and recovering from emergencies and disasters that much more effective.

This catalogue will be updated with new suppliers and their goods and services offerings as they are added to the Panel.

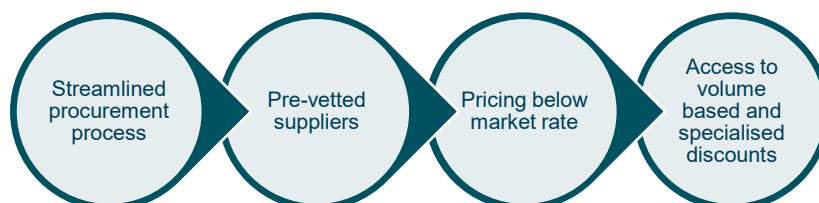
This catalogue does not provide pricing information for any of the goods or services offered through the Panel. Pricing information is only available to entities who are admitted as Customers to the Panel.



Current as at 26 August 2025

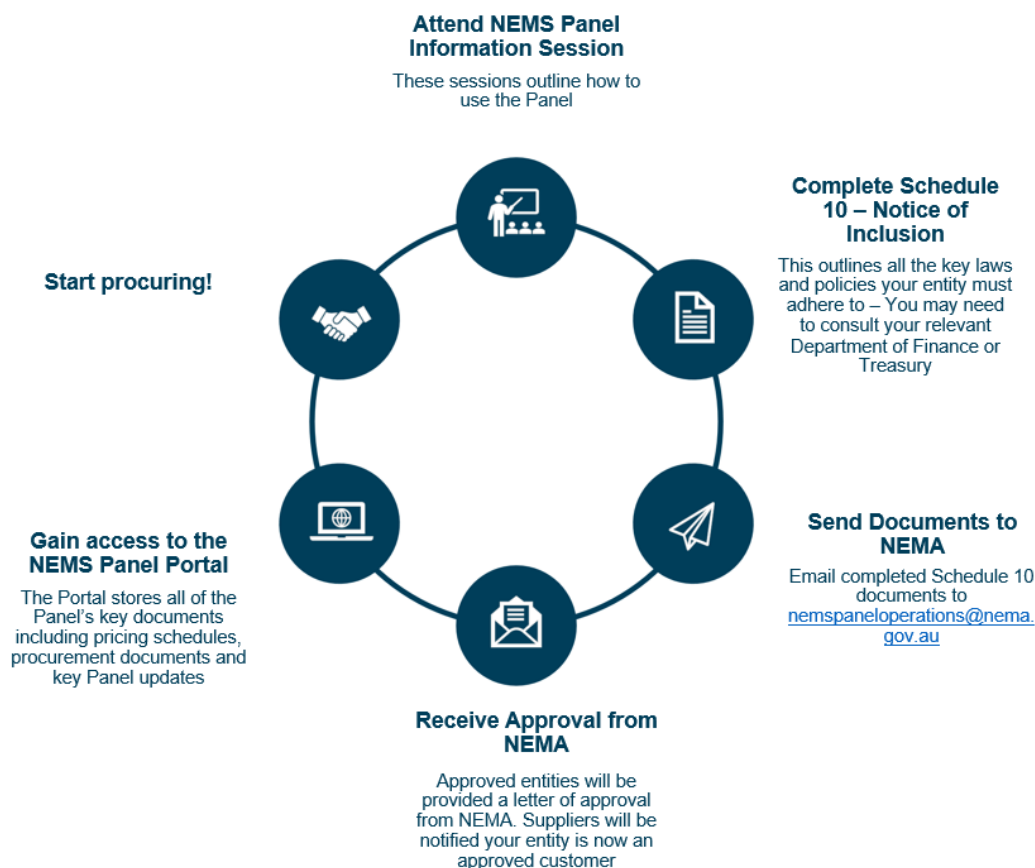
Customer Benefits

The NEMS Panel simplifies and streamlines the process of procuring as the suppliers have already been pre-vetted. Some of the benefits of becoming a Panel Customer are listed below:



Panel access

The visual below details the process on how your entity can become a NEMS Panel Customer. For further information please contact the NEMS Panel management team at nemspaneloperations@nema.gov.au.





Current as at 26 August 2025

Categories in the NEMS Panel

Category	Available on Panel	Suppliers
1. Single Use Goods		
1.1 Sandbags	✓	Toll Remote Logistics
1.2 Other (Temporary) Flood Mitigation Barriers	✓	Bluemont Krisis Protection Pipe Management Australia Spearpoint Solutions & Technology Toll Remote Logistics
1.3 Body Bags	✓	Midmed Proton Dynamics Westlab Toll Remote Logistics
1.4 Non-Medical Biohazard Kits	✓	Proton Dynamics Westlab Toll Remote Logistics
1.5 Synthetic Pit Linings (animal carcasses)	✓	CE Bartlett
2. Other Goods		
2.1 High Output Generators and Fuel Storage	✓	C3 Systems Coates Hire Operations GenPlus Hire Humanihut
2.2 Ultra-High-Volume Dewatering (Flood) Pumps	✓	Bluemont Coates Hire Operations
2.3 High-Volume Dewatering (Flood) Pumps	✓	Bluemont C3 Systems Coates Hire Operations
2.4 Mobile Mortuary Equipment	✓	Global Defence Solutions Midmed



Current as at 26 August 2025

3. Shelter, Portable Water and Camp Solutions		
3.1 Emergency Shelter Camps – Semi Rigid	✓	Humanihut
3.2 Emergency Shelter Camps – Soft Shelter (Tents)	✓	C3 Systems Coates Hire Operations Fire System Supplies Global Defence Solutions Hannagan Solutions OPEC Systems
4. Ancillary and Independent Equipment for Emergency Shelter Camps		
4.1 Potable Drinking Water	✓	Bluemont C3 Systems Humanihut
4.2 Ablution Facilities	✓	Fire System Supplies Global Defence Solutions Humanihut
4.3 Laundry Facilities	✓	Global Defence Solutions Humanihut
4.4 Relocatable Storage Solutions	✓	C3 Systems Coates Hire Operations DomeShelter Australia Hannagan Solutions Humanihut KB Logistics Toll Remote Logistics
5. Emergency Responses and Associated Services		
5.1 Emergency Response Logistics and Specialist Humanitarian Services	✓	Aspen Medical Red R Australia Respond Global
5.2 Enhanced Supply Chain Service	✓	Anywise Consulting Linfox Toll Remote Logistics Ventia



Current as at 26 August 2025

5.3 Engineering and Technical Services	✓	Anywise Consulting McGloin Baker Pipe Management Australia Spearpoint Solutions & Technology Ventia
5.4 Camp Establishment and de-Establishment Services Semi-Rigid Shelters.	✓	Coates Hire Operations Humanihut OPEC Systems Toll Remote Logistics Ventia
5.5 Camp Establishment and de-Establishment Services – Soft Shelter (Tents)	✓	Coates Hire Operations OPEC Systems Toll Remote Logistics Ventia
5.6 Establishment, Installation, Operation and De- establishment of Water Purification and Water Storage Services	✓	Humanihut Ventia
5.7 Establishment, Installation, Operation and De- establishment of Ablution Units and Sanitation Facilities	✓	Coates Hire Operations Humanihut OPEC Systems Toll Remote Logistics Ventia
5.8 Establishment, Installation, Operation and De- establishment of Laundry Facilities	✓	Coates Hire Operations Humanihut Toll Remote Logistics Ventia
5.9 Establishment, Installation, Operation and De- establishment of Power Generation Equipment	✓	Coates Hire Operations Humanihut GenPlus Hire Toll Remote Logistics Ventia
5.11 Other Services	✓	Humanihut



Current as at 26 August 2025

6. Warehousing and Logistics Services (and Associated Optional Services)		
6.1 Warehousing of Goods purchased through the NEMS Panel and other goods	✓	Energy LogistiX Humanihut KB Logistics Linfox Simon Transport Toll Remote Logistics
6.2 Warehousing Services	✓	Energy LogistiX Humanihut KB Logistics Linfox Simon Transport Toll Remote Logistics
6.3 Transportation and Freight of Goods purchased through the NEMS Panel	✓	Energy LogistiX Humanihut Linfox Simon Transport Toll Remote Logistics
7. Bundled Goods and Services		
7.1 Bundled Goods and Services	✓	Anywise Consulting Linfox Global Defence Solutions Humanihut



Current as at 26 August 2025

Single Use Goods

Sandbags

Untreated hessian made in accordance with Indian Standard IS 2818, Part II, Type 1. Suitable for immediate use.

Product ID	Supplier	Description	Purchase Type	
			Buy	Lease
HB084035530 5SBTS	Toll Remote Logistics	Hessian sandbag 840x355mm, approximately 200gm per piece. Selvege mouth, safety sewn with 80mm vent, 3-ply 600mm tie string knotted at centre and tied 650mm above bottom seam. 125 Bags per Bundle.	✓	x

Other (Temporary) Flood Mitigation Barriers

Removable and relocatable. Reusable systems that include plastic or metal barriers, water-filled, sand-filled or military grade watertight asset protection bags, designed to help keep indoor home and business contents dry from floodwater damage.

Product ID	Supplier	Description	Purchase Type	
			Buy	Lease
BW52 BW52IC BW52OC	Bluemont	Boxwall BW52 500mm high mobile reusable flood barrier Comes as: Straight inside corner outside corner	✓	x
BW102 BW102 IC BW102 OC	Bluemont	Boxwall BW102 1000mm high mobile flood barrier Comes as: Straight Inside corner Outside corner	✓	x



Current as at 26 August 2025

Product ID	Supplier	Description	Purchase Type	
KB01	Krisis Protection	Handy Krisis Bag 500mm x 500mm x 500mm; 0.13m ³ ; IPX8 verified, internationally certified military grade watertight asset protection bag designed to help keep indoor home and business contents dry from floodwater damage.	✓	x
KB02	Krisis Protection	Standard Krisis Bag 2.0m x 1.5m x 1.5m; 3.5m ³ ; IPX8 verified, internationally certified military grade watertight asset protection bag designed to help keep indoor home and business contents dry from floodwater damage.	✓	x
KB03	Krisis Protection	Super Krisis Bag 3.0m x 2.0m x 1.5m; 9m ³ ; IPX8 verified, internationally certified military grade watertight asset protection bag designed to help keep indoor home and business contents dry from floodwater damage.	✓	x
P61 P61C	Pipe Management Australia	Geodesign Flood Barrier Industrial P61 or 45Deg Corner P61	✓	x
P81 P81C	Pipe Management Australia	Geodesign Flood Barrier Industrial P81 or 45Deg Corner P81	✓	x
P101 P101C	Pipe Management Australia	Geodesign Flood Barrier Industrial P101 or 45Deg Corner P101	✓	x
P121 P121C	Pipe Management Australia	Geodesign Flood Barrier Industrial P121 or 30 Deg Corner P121	✓	x
C122 C122C	Pipe Management Australia	Geodesign Flood Barrier Heavy Duty C122 or 30 Deg Corner C1	✓	x
C152 C152C	Pipe Management Australia	Geodesign Flood Barrier Heavy Duty C152 or 30 Deg Corner C152	✓	x
C184 C184C	Pipe Management Australia	Geodesign Flood Barrier Heavy Duty C184 or 18 Deg Corner C184	✓	x



Current as at 26 August 2025

Product ID	Supplier	Description	Purchase Type	
C213 C213C	Pipe Management Australia	Geodesign Flood Barrier Heavy Duty C213 or 15 Deg Corner C213	✓	x
C245 C245C	Pipe Management Australia	Geodesign Flood Barrier Heavy Duty C245 or 15 Deg Corner C245	✓	x
As above	Pipe Management Australia	Replacement Membrane for Geodesign Flood Barrier Available for: <ul style="list-style-type: none">• Industrial P61• Industrial P81• Industrial P101• Industrial P121• Industrial C152 Replacement• Industrial C122 Replacement• Heavy Duty C184• Heavy Duty C213• Heavy Duty C245	✓	x
DC Ranger	Spearpoint Solutions	DefenCell Ranger Flood Barriers 1.30 x 0.65 x 0.5m, sand colour - 1 x 40' ISO (3,600 per 40')	✓	x
DC LITE	Spearpoint Solutions	DefenCell LITE Flood Barriers 3.20 x 0.65 x 0.5m, sand colour - 1 x 40' ISO (1,600 per 40')	✓	x
DC T2	Spearpoint Solutions	DefenCell T2 Flood Barriers 4.90 x 1.35 x 0.5m, sand colour - 1 x 40' ISO (980 per 40')	✓	x
DC T3	Spearpoint Solutions	DefenCell T3 Flood Barriers 4.90 x 1.90 x 0.5m, sand colour - 1 x 40' ISO (720 per 40')	✓	x
DC T4	Spearpoint Solutions	DefenCell T4 Flood Barriers 4.90 x 2.50 x 0.5m, sand colour - 1 x 40' ISO (480 per 40')	✓	x
DC MAC1	Spearpoint Solutions	DefenCell MAC1 Flood Barriers 10.0 x 1.06 x 1.37m - 1 x 40' ISO (112 per 40')	✓	x
DC MAC3	Spearpoint Solutions	DefenCell MAC3 Flood Barriers	✓	x



Current as at 26 August 2025

Product ID	Supplier	Description	Purchase Type	
		10.0 x 1.0 x 1.0m - 1 x 40' ISO (160 per 40')		
DC MAC5	Spearpoint Solutions	DefenCell MAC5 Flood Barriers 0.61 x 0.61 x 3.05m - 1 x 40' ISO (600 per 40')	✓	x
BW102	Toll Remote Logistics	NOAQ BoxWall mobile self-anchoring flood barrier50cm.	✓	x
BW102	Toll Remote Logistics	NOAQ BoxWall mobile self-anchoring flood barrier100cm.	✓	x



Current as at 26 August 2025

Body Bags

Compliant with Australian industry standards and practices. D-shaped body bag with a raised zip top and high-quality waterproof zipper.

Product ID	Supplier	Description	Purchase Type	
			Buy	Lease
NW.BB-S	Midmed	Nutwell – Standard Standard size no handles, 1040x2180mm, 595g/pc, Thickness 131mic	✓	x
NW.BB-SH	Midmed	Nutwell – Standard Standard size with 6 handles, 1040x2180mm, 1330g/pc, Thickness 250mic	✓	x
NW.BB-L-H	Midmed	Nutwell – Large Large Size with 6 handles, 1200 x2180mm, 920g/pc, Thickness 250mic	✓	x
NW.BB-XL	Midmed	Nutwell – X-Large X Large Size with 6 handles, 1200 x2240mm, 1530g/pc, Thickness 250mic	✓	x
NW.BB-C	Midmed	Nutwell – Child Child Size, No handles, 900 x 1500mm, Thickness 131mic	✓	x
NW.BB-I	Midmed	Nutwell – Infant Infant Size, No Handles, 460 x 720mm, Thickness 131mic	✓	x
SPBBO1	Proton Dynamics	Body bag - Adult – Standard 900mm x 2450mm (Colour: Black, Blue and White)	✓	x
SPBB03	Proton Dynamics	Body bag - Child 700mm x 1.000mm (Colour: Black, Blue and White)	✓	x
SPBB02	Proton Dynamics	Body bag - Bariatric - XL 1200mm x 2500mm (Colour: Black, Blue and White)	✓	x
SPBB04	Proton Dynamics	Body bag - Bariatric - XXL 1800mm x 2500mm (Colour: Black, Blue and White)	✓	x



Current as at 26 August 2025

Product ID	Supplier	Description	Purchase Type	
CRVFLX	Proton Dynamics	Recovery Bag - CoverFlex Adult Size only (Colour: Red)	✓	X
664-186-1	Westlab	Infant Body Bag 75 x 50cm, 140gsm, Blue, ID pocket	✓	X
Adult recovery Bag	Toll Remote Logistics	CoverFlex ADULT Recovery Body Bag Includes valve & lining	✓	x
Adult recovery Bag	Toll Remote Logistics	CoverFlex ADULT Recovery Body Bag Includes valve & lining	✓	x
Adult recovery Bag	Toll Remote Logistics	CoverFlex ADULT Recovery Body Bag (lined)	✓	x
Adult recovery Bag	Toll Remote Logistics	CoverFlex CHILD Recovery Bag (lined)	✓	x
Adult recovery Bag	Toll Remote Logistics	CoverFlex CHILD Recovery Bag (unlined)	✓	x
Adult recovery Bag	Toll Remote Logistics	Adult D Shape Body Bag 2.45m X 90cm	✓	x
Adult recovery Bag	Toll Remote Logistics	Teen Body Bag 175 X 70cm	✓	x
Adult recovery Bag	Toll Remote Logistics	Child Body Bag 100 X 70cm	✓	x
Adult recovery Bag	Toll Remote Logistics	Infant Body Bag 75 X 50cm	✓	x
Adult recovery Bag	Toll Remote Logistics	Prem Body Bag 40 X 40cm	✓	x
Adult recovery Bag	Toll Remote Logistics	Adult XXL D Shape Body Bag with webbing handles 2.45m X 1.8m	✓	x
Adult recovery Bag	Toll Remote Logistics	Bariatric Top Zip Body Bag with webbing handles 2.45m X 1.2m	✓	x
664-186-A	Westlab	Adult Body Bag 245cm x 90cm, 140gsm, Blue, D-Shape, ID Pocket	✓	x



Current as at 26 August 2025

Product ID	Supplier	Description	Purchase Type	
664-186-AH	Westlab	Adult Body Bag 245cm x 90cm, 140gsm, Blue, D-Shape, ID Pocket, 2 Webb Handles Across-Ways	✓	x
664-186-CF	Westlab	Adult Emergency Recovery Body Bag 245cm x 180cm, 610gsm, ID Pocket, Top Zip, Waterproof, Without Valve, Webbing Handles	✓	x
664-186-CF-V	Westlab	Adult Emergency Recovery Body Bag 245cm x 180cm, 610gsm, ID Pocket, Top Zip, Waterproof, With Valve, Webbing Handles	✓	x
664-186-XL	Westlab	Bariatric Body Bag 245cm x 180cm, 140gsm, Blue, D-Shape, ID Pocket, 2x Webb Handles Across Ways	✓	x
664-186-C	Westlab	Child Body Bag 100cm x 70cm, 140gsm, Blue, D-Shape, ID Pocket	✓	x



Current as at 26 August 2025

Non-Medical Biohazard Kits

Kits designed for use by non-medically trained personnel to provide protection from blood borne pathogens, infectious diseases, and biohazards.

Product ID	Supplier	Description	Purchase Type	
			Buy	Lease
PBK004	Proton Dynamics	Non-Medical Biohazard Starter Kit (All Items are single use) <ul style="list-style-type: none">• Instruction sheet• Safetek Disposable Face shield, double-sided anti-fog• Safetek ImpulseClear Lens Safety Glasses• 3M Flat Fold Particulate Respirator• 3M 318-1008 Push-In Ear Plugs w/ Grip Rings, Class 4 SLC80 24dB, Uncorded in Polybag• Martula type 5/6 Laminated Disposable Coveralls• AeroGlove Nitrile Gloves - (2 Pairs)• Bastion Polyethylene Boot Covers• Safetek Polypropylene 24" Bouffant Cap• Sonidet PH Neutral Detergent• Purell Advance Hand Sanitiser• Janex Absorbent Microfibre Cloth• PinPak LDPE Bio Hazardous Poly Waste bags• 10 Litre Dry Bag - Kit	✓	x
AE1832	Proton Dynamics	3M Half Face piece Re-useable Respirator 6200 , Includes Organic Vapour Filter Cartridge	✓	x
AE1651	Proton Dynamics	3M 6700 Full Face 6000 Series Re-usable Respirator Includes Organic Vapour Filter Cartridge	✓	x
CE1031	Proton Dynamics	Blundstone Safety Gumboots	✓	x
Base Kit	Toll Remote Logistics	Non-Medical Biohazard Base Kit – with half mask respirator <u>OR</u> full face piece respirator <ul style="list-style-type: none">• Instruction sheet• Full OR half face shield (size adjustable) and / or single use eye protection (safety glasses)• Single use P2/N95 face mask• Single use disposable foam earplugs• Single use water-resistant jumpsuit/coverall• Single use nitrile gloves (2 pair)• Single use waterproof shoe covers• Single use hair bonnet	✓	x



Current as at 26 August 2025

Product ID	Supplier	Description	Purchase Type	
		<ul style="list-style-type: none">Single use packaged PH neutral detergentSingle use packaged sanitising concentrateSingle use absorbent cleaning clothsBio-hazard waste bags for safe disposal of wasteRe-usable Elastometric full face piece respiratorRe-usable dedicated waterproof dedicated shoes/gumboots		
Base Kit	Westlab	Non-Medical Biohazard Base Kit <ul style="list-style-type: none">Instruction sheetFull face shield (size adjustable) and / or single use eye protection (safety glasses)Single use P2/N95 face maskSingle use disposable foam earplugsSingle use water-resistant jumpsuit/coverallSingle use nitrile gloves (2 pair)Single use waterproof shoe coversSingle use hair bonnetSingle use packaged PH neutral detergentSingle use packaged sanitising concentrateSingle use absorbent cleaning clothsBio-hazard waste bags for safe disposal of wasteRe-usable Elastometric half mask respirator(M) *Standard safety glasses can be substituted with single use elastic face shield* **All components can be bought individually**	✓	x
N/A	Westlab	Cases for Non-Medical Biohazard Kits <ul style="list-style-type: none">Medium metal 7.7LMedium green waterproof 9.2LMedium white & orange rugged 9LLarge red bag 49x30x28.5cm	✓	x
R7500G-M	Westlab	MaxiGuard Half Mask Silicone Painters Kit (Blister Pack) (Minimum order quantity 50)	✓	x
FWG906	Westlab	MaxiSafe Non-Safety Gumboots – Black (Minimum order quantity 24)	✓	x
664-250	Westlab	Westlab Disposable Face Shield Single Use, Carton of 200	✓	x



Current as at 26 August 2025

Synthetic Pit Linings (Animal carcasses)

Geo-synthetic clay liners, high-density polyethylene, geo-membranes, protection geo-textiles, separation geo-textiles and geo-cells.

Please note: all synthetic pit liners come in the below sizing – please add the required sizing with the relevant product ID when seeking quote and/or information

- (1) 20m x 10m 250gsm
- (2) 20m x 20m 250gsm
- (3) 30m x 20m 250gsm
- (4) 30m x 30m 250gsm
- (5) 40m x 30m 250gsm

Product ID	Supplier	Description	Purchase Type	
			Buy	Lease
301042	CE Bartlett	Canvacon Pit Liner	✓	x
302689	CE Bartlett	Landmark PP Pit Liner	✓	x
301063	CE Bartlett	NF Trafab Pit Liner	✓	x
303048	CE Bartlett	Aquacon Pit Liner	✓	x



Current as at 26 August 2025

Other Goods

High Output Generators and Fuel Storage

Transportable, relocatable, weather and soundproofed diesel powered generators. Meets relevant Australian and industry safety standards and requirements including storage of fuel and dangerous goods transport regulations.

Product ID	Supplier	Description	Purchase Type	
			Buy	Lease
HO GEN 8	C3 Systems	Kubota GK10S-1 Diesel 10kVA Silenced Set 1 Phase (Includes 4 year warranty)	✓	x
HO GEN 9	C3 Systems	Kubota GK10S Diesel 10kVA Silenced Set 3 Phase (Includes 4 year warranty)	✓	x
HO GEN 10	C3 Systems	Cummins PLG-CM60S Diesel 60kVA Silenced Set (Includes 4 year warranty)	✓	x
HO GEN 11	C3 Systems	Cummins PLG-CM110S Diesel 110kVA Canopy Set (Includes 4 year warranty)	✓	x
HO GEN 12	C3 Systems	Cummins GC800S 800kVA Diesel Canopy Set (Includes 4 year warranty)	✓	x
HO GEN 13	C3 Systems	Hybrid PLG-PM21R Hybrid GENSET 21kVA system (Includes 4 year warranty)	✓	x
HO GEN 24	C3 Systems	PLHG PMRR11R 1Ph 11 kVA 1 PH Hybrid Generator Unit (Includes 4 year warranty)	✓	x
HO GEN 25	C3 Systems	PLHG PMRR11R 3Ph 11kVA 3PH Hybrid Generator Unit (Includes 4 year warranty)	✓	x



Current as at 26 August 2025

Product ID	Supplier	Description	Purchase Type	
HO GEN 27	C3 Systems	PGRID PGRID160 160kVA 3PH Hybrid Generator Unit (Includes 4 year warranty)	✓	x
HO GEN 26	C3 Systems	PLHG PM60R 3PH 60kVA 3PH Hybrid Generator Unit (Includes 4 year warranty)	✓	x
HO GEN 28	C3 Systems	PGRID PGRID320 320kVA 3PH Hybrid Generator Unit (Includes 4 year warranty)	✓	x
HO GEN 15	C3 Systems	Fuelco Kube LTKU4500 Bulk fuel tank includes supply lines - 4500 L	✓	x
HO GEN 14	C3 Systems	Fuelco Kube LTKU2500 Bulk fuel tank includes supply lines - 2500 L	✓	x
HO GEN 21	C3 Systems	Fleximake FMPBT0500TPUM Bulk fuel bladder tank with ground sheet - Extra Large 500 kl	✓	x
HO GEN 17	C3 Systems	Fleximake FMDBT0001TPUM Bulk fuel bladder tank with ground sheet - Micro 1 kl	✓	x
HO GEN 18	C3 Systems	Fleximake FMPBT0010TPUM Bulk fuel bladder tank with ground sheet - Small 10 kl	✓	x
HO GEN 19	C3 Systems	Fleximake FMPBT0050TPUM Bulk fuel bladder tank with ground sheet - Medium 50 kl	✓	x
HO GEN 20	C3 Systems	Fleximake FMPBT00100TPUM Bulk fuel bladder tank with ground sheet - Large 100 kl	✓	x
12905 12915	Coates Hire	Generator – diesel – small power 11 - 14kVa 20 - 25kVa	x	✓



Current as at 26 August 2025

Product ID	Supplier	Description	Purchase Type	
12920		26 – 37kVa		
12935		56 - 60kVa		
12945		76 – 80kVa		
12950		96 – 100kVa		
N/A		100 – 135kVa		
12960	Coates Hire	Generator – diesel – medium power	x	✓
12970		150 – 160kVa		
12975		200 – 230kVa		
12985		250 – 275kVa		
		300 – 380kVa		
12995	Coates Hire	Generator – diesel – large power	x	✓
13015		500 – 600kVa 1250kVa		
35055	Coates Hire	Fuel tanks	x	✓
35060		1000L		
35065		1500 – 2500L		
35070		4000 – 4500L		
35095		5000 – 6000L		
N/A		1000 – 1250L		
		10,000L		
All generators below come <u>skid mounted with forklift pockets and centre lift point</u> . Includes: <ul style="list-style-type: none">• Hardwire terminal connection box• On-board diesel fuel tank with external fuel connection (capacities vary)• Remote start capability with silenced canopy and lockable doors.				
QES9 - Atlas Copco QES 9	GenPlus	Portable 7kVA Single Phase Generator with 3x 15A outlet + 1x 32A outlet single phase. 250L fuel tank	x	✓
QAS14/1 - Atlas Copco QAS 14	GenPlus	Portable 10kVA Single Phase Generator with 3x 15A outlet + 1x 32A outlet single phase. 115L fuel tank	x	✓
QAS14 - Atlas Copco QAS 14	GenPlus	Portable 14kVA Three Phase Generator with 3x 15A outlet + 1x 32A outlet three phase. 315L fuel tank	x	✓
QES20/1 - Atlas Copco QES 20	GenPlus	Portable 16kVA Single Phase Generator with 3x 15A outlet + 1x 32A outlet single phase. 250L fuel tank	x	✓



Current as at 26 August 2025

Product ID	Supplier	Description	Purchase Type	
QES20 - Atlas Copco QES 20	GenPlus	Portable 20kVA Three Phase Generator with 3x 15A outlet + 1x 32A outlet three phase. 250L fuel tank	x	✓
QAS20/1 - Atlas Copco QAS 20	GenPlus	Portable 13kVA Single Phase Generator with 3x 15A outlet + 1x 32A outlet single phase 115L fuel tank	x	✓
QAS20 - Atlas Copco QAS 20	GenPlus	Portable 20kVA Three Phase Generator with 3x 15A outlet + 1x 32A outlet single phase. 115L fuel tank	x	✓
QES30/1 - Atlas Copco QES 30	GenPlus	Portable 22kVA Single Phase Generator with 3x 15A outlet + 1x 32A outlet single phase. 480L fuel tank	x	✓
QES30 - Atlas Copco QES 30	GenPlus	Portable 30kVA Three Phase Generator with 3x 15A outlet + 1x 32A outlet Three phase. 480L fuel tank	x	✓
QAS30 - Atlas Copco QAS 30	GenPlus	Portable 30kVA Three Phase Generator with 3x 15A outlet + 1x 32A outlet three phase 250L fuel tank	x	✓
QES40/1 - Atlas Copco QES 40	GenPlus	Portable 32kVA Single Phase Generator with 3x 15A outlet + 1x 32A outlet single phase 480L fuel tank	x	✓
QES40 - Atlas Copco QES 40	GenPlus	Portable 40kVA Three Phase Generator with 3x 15A outlet + 1x 32A outlet three phase. 480L fuel tank	x	✓
QAS40 - Atlas Copco QAS 40	GenPlus	Portable 40kVA Three Phase Generator with 3x 15A outlet + 1x 32A outlet three phase. 250L fuel tank	x	✓
QAS60 - Atlas Copco QAS 60	GenPlus	Portable 60kVA Three Phase Generator with 2x 15A outlet + 2x 32A + 2x 50A outlets three phase. 300L - 550L fuel tank	x	✓
QAS80 - Atlas Copco QAS 80	GenPlus	Portable 80kVA Three Phase Generator with 1x 15A outlet + 2x 32A + 2x 50A outlets three phase. 550L fuel tank	x	✓
QAS5-80 - Atlas Copco QAS5 80	GenPlus	Portable 80kVA Three Phase Generator with 3x 15A outlet + 3x 32A + 3x 50A outlets three phase. 430L fuel tank	x	✓
QAS100 - Atlas Copco QAS 100	GenPlus	Portable 100kVA Three Phase Generator with 1x 15A outlet + 2x 32A + 2x 50A outlets three phase. 550L fuel tank	x	✓
QAS5-100 - Atlas Copco QAS5 100	GenPlus	Portable 100kVA Three Phase Generator with 3x 15A outlet + 3x 32A + 3x 50A outlets three phase. 430L fuel tank	x	✓
QAS5-120 - Atlas Copco QAS5 120	GenPlus	Portable 120kVA Three Phase Generator with 3x 15A outlet + 3x 32A + 3x 50A outlets three phase. 430L fuel tank	x	✓



Current as at 26 August 2025

Product ID	Supplier	Description	Purchase Type	
QAS150 - Atlas Copco QAS 150	GenPlus	Portable 150kVA Three Phase Generator with 1x 15A outlet + 4x 32A + 2x 50A outlets three phase. 300L - 550L fuel tank	x	✓
QAS5-150 - Atlas Copco QAS5 150	GenPlus	Portable 150kVA Three Phase Generator with 1x 15A outlet. 600L fuel tank	x	✓
QAS200 - Atlas Copco QAS 200	GenPlus	Portable 200kVA Three Phase Generator with 1x 15A outlet. 1350L fuel tank	x	✓
QAS5-200 - Atlas Copco QAS5 200	GenPlus	Portable 200kVA Three Phase Generator with 1x 15A outlet. 600L fuel tank	x	✓
QAS250 - Atlas Copco QAS 250	GenPlus	Portable 250kVA Three Phase Generator with 1x 15A outlet. 470L fuel tank	x	✓
QAS250/LR - Atlas Copco QAS 250	GenPlus	Portable 250kVA Three Phase Generator with 1x 15A outlet. 1350L fuel tank	x	✓
QAS325 - Atlas Copco QAS 325	GenPlus	Portable 325kVA Three Phase Generator with 1x 15A outlet. 490L fuel tank	x	✓
QAS325/LR - Atlas Copco QAS 325	GenPlus	Portable 325kVA Three Phase Generator with 1x 15A outlet. 1770L fuel tank	x	✓
QAS400 - Atlas Copco QAS 400	GenPlus	Portable 400kVA Three Phase Generator with 1x 15A outlet. 1770L fuel tank	x	✓
QAS500 - Atlas Copco QAS 500	GenPlus	Portable 500kVA Three Phase Generator with 1x 15A outlet. 980L fuel tank	x	✓
<p>All generators below come with <u>20ft ISO container with forklift pockets and crane top lift points</u></p> <p>Includes:</p> <ul style="list-style-type: none"> • Hardwire terminal connection box • On-board diesel fuel tank with external fuel connection (capacities vary) • Remote start capability with silenced canopy and lockable doors. 				
QAC725 - Atlas Copco QAC 725	GenPlus	Portable 725kVA Three Phase Containerised Generator. 1600L fuel tank	x	✓
QAC1000 - Atlas Copco QAC 1000	GenPlus	Portable 1,000kVA Three Phase Containerised Generator. 1500L fuel tank	x	✓
QAC1250 - Atlas Copco QAC 1250	GenPlus	Portable 1,250kVA Three Phase Containerised Generator. 1500L fuel tank	x	✓



Current as at 26 August 2025

Product ID	Supplier	Description	Purchase Type	
QAC1450 - Atlas Copco QAC 1450	GenPlus	Portable 1,450kVA Three Phase Containerised Generator. 1600L fuel tank	x	✓
JCD – Jerry Can Yellow	GenPlus	Yellow 20L Diesel Jerry Can	x	✓
10A20 - 10A 20m Lead	GenPlus	10A 20m single phase extension lead	x	✓
15A20 - 15A 20m Lead	GenPlus	15A 20m single phase extension lead	x	✓
10ARCD - 10A RCD Box	GenPlus	4x 10A outlets with RCD protection (orange)	x	✓
15ARCD - 15A RCD Box	GenPlus	4x 15A outlets with RCD protection (orange)	x	✓
Paralleling Leads Various	GenPlus	Paralleling leads for all sizes of generators (2kVA - 1450kVA)	x	✓
32A Lead	GenPlus	32A 5-pin extension leads. Comes in the following lengths: <ul style="list-style-type: none">5m / 10m / 15m / 40m / 50m / 60m / 75m	x	✓
50A Lead	GenPlus	50A 5pin extension leads. Comes in the following lengths: <ul style="list-style-type: none">10m / 15m / 20m / 30m	x	✓
Powerlock Cable Set 400A	GenPlus	400A Powerlock cable set. Comes in the following lengths: <ul style="list-style-type: none">3m / 5m / 10m / 15m / 20m / 25m / 30m / 40m / 50m	x	✓
Generator connection cable sets all fitted with lug-tail to suit service fuses/ main switches or fitted with lug-lug (12mm hole) for bolt on connections				
CBL35	GenPlus	Generator connection cable set 35mm <ul style="list-style-type: none">Lengths: 7m / 10m / 15m / 20m / 25m / 30m / 40m / 50m / 60m	x	✓
CBL50	GenPlus	Generator connection cable set 50mm <ul style="list-style-type: none">Lengths: 10m / 15m / 20m / 25m / 30m / 40m / 50m	x	✓
CBL95	GenPlus	Generator connection cable set size 95mm <ul style="list-style-type: none">Lengths: 10m / 20m / 30m / 50m	x	✓
CBL120	GenPlus	Generator connection cable set 120mm	x	✓



Current as at 26 August 2025

Product ID	Supplier	Description	Purchase Type	
		<ul style="list-style-type: none">Lengths: 10m / 15m / 20m / 25m / 30m / 40m / 50m		
CBL150	GenPlus	Generator connection cable set 150mm <ul style="list-style-type: none">Lengths: 6m / 10m / 20m / 30m / 40m / 50m	x	✓
CBL240	GenPlus	Generator connection cable set 240mm <ul style="list-style-type: none">Lengths: 8m / 10m / 15m / 20m / 25m / 30m / 50m	x	✓
Connection Sundries Various	GenPlus	Lugs/ 16mm or 35mm jumbo Connectors/ Heatshrink/ Links/Line taps/ insulation tape/ cable ties/ cable end covers or insulation boots for safe isolation or connection etc.	-	-
5CHCC- Cable Cover Yellow 5- Channel	GenPlus	1m length Trafficable by vehicle	x	✓
5CHCC-CNR - Cable Cover Yellow 5- Channel	GenPlus	Left/Right angles + Y-piece trafficable by vehicle	x	✓
1CHCHH - Cable Cover Red Drop over	GenPlus	1m length Trafficable by pedestrian	x	✓
BOLLARD	GenPlus	Bollard T-Top Reflective - 1150mm High Reflective Bollard	x	✓
PARRAWEB	GenPlus	Parawebbing Orange - 1m x 50m length rolls to suit	x	✓
DBORG/6 - Distribution Board Orange Plugin	GenPlus	6-way 15A distribution board 32A Supply	x	✓
DBORG/12 - Distribution Board Orange Plugin	GenPlus	12-way 15A distribution board 32A Supply	x	✓
DBORG/PL - Distribution Board Orange Powerlock	GenPlus	12-way 15A + 3-way 32A Distribution board. Powerlock Supply	x	✓
DB400/PL - Distribution	GenPlus	8-way 50A distribution board Powerlock Supply	x	✓



Current as at 26 August 2025

Product ID	Supplier	Description	Purchase Type	
Board 400A Media				
DBTIN - Distribution Board	GenPlus	600mmx600mm - Various10A/15A/32A configurations with stand	x	✓
DB400 - Distribution Board 400A	GenPlus	400A rated with configurable options (20A - 400A C.B's)	x	✓
DB600 - Distribution Board 600A	GenPlus	600A rated with configurable options (63A - 250A C.B's)	x	✓
DB800 - Distribution Board 800A	GenPlus	800A rated with configurable option (125A - 630A)	x	✓
DB1000 - Distribution Board 1000A	GenPlus	1000A rated with configurable options (10A - 630A C.B's)	x	✓
DB1600 - Distribution Board 1600A	GenPlus	1600A rated with configurable options (10A - 1000A C.B's)	x	✓
DB4000 - Containerised Distribution Board 4000A	GenPlus	4000A rated with configurable options (150A - 4000A C.B's)	x	✓
CSO - Site Shed Containerised	GenPlus	20ft ISO containerised Insulated & Air conditioned site shed. Comes with 1x toilet (Cassette style disposal with spare cassette), 1x table, 6x chairs, 1x 60L fridge, 1x microwave, 1x Jug. Powered by 2x 15A power supplies	x	✓
LS250 - Load Centre 250A	GenPlus	Load centre - 250A with configurable options	x	✓
MTS100 - Manual Transfer Switch 100A	GenPlus	Manual transfer switch - 100A rated	x	✓
MTS400 - Manual Transfer Switch 400A	GenPlus	Manual transfer switch - 400A rated with Powerlock connections	x	✓
ATS100 - Automatic	GenPlus	Automatic transfer switch - 100A rated 4-pole to 4pole weatherproof and transportable	x	✓



Current as at 26 August 2025

Product ID	Supplier	Description	Purchase Type	
Transfer Switch 100A				
ATS200 - Automatic Transfer Switch 200A	GenPlus	Automatic transfer switch - 200A rated 4-pole to 4-pole weatherproof and transportable	x	✓
ATS400 - Automatic Transfer Switch 400A	GenPlus	Automatic transfer switch - 400A rated 4-pole to 4-pole weather proof and transportable via forklift pockets and crane lift points	x	✓
ATS630 - Automatic Transfer Switch 630A	GenPlus	Automatic transfer switch - 630A rated 4-pole to 4-pole weather proof and transportable via forklift pockets and crane lift points	x	✓
ATS1250 - Automatic Transfer Switch 1250A	GenPlus	Automatic transfer switch - 1200A rated 4-pole to 4-pole weather proof and transportable via forklift pockets and crane lift points	x	✓
LB200 - Link Box 200A	GenPlus	Link box - 200A rated	x	✓
LB400 - Link Box 400A	GenPlus	Link box - 400A rated	x	✓
LB2000 - Link Box 2000A	GenPlus	Link box - 2000A rated	x	✓
BLISSFOX	GenPlus	On-road mobile trailer mounted light tower with 4x 2000W flood lights and 3x 15A outlets	x	✓
FL	GenPlus	1/2" Fuel Lines with quick-connect couplings to suit Genplus tanks and generators: <ul style="list-style-type: none">4m / 6m / 8m / 10m / 12m / 15m	x	✓
FL20	GenPlus	3/4" Fuel Lines with quick-connect couplings to suit Genplus tanks and generators <ul style="list-style-type: none">20m	x	✓
Fuel Tank T1000 T2000 T3000	GenPlus	Portable tank with forklift pockets and crane points. Double bunded with the ability to be transported full of diesel. Fitted with generator and diesel pump connection points Comes in sizes: <ul style="list-style-type: none">1000L2000L3000L	✓	x



Current as at 26 August 2025

Product ID	Supplier	Description	Purchase Type	
T4000 T11500 T13200 T32000		<ul style="list-style-type: none">• 4000L• 11,500L• 13,200L• 32,000L		
DP240 - Diesel Pump 240V	GenPlus	Auto shut-off fuel gun with counter and 15m delivery hose	x	✓
DP12 - Diesel Pump 12V	GenPlus	Auto shut-off fuel gun with counter and 15m delivery hose	x	✓
DFT1000 - Trailer 1000L Diesel delivery	GenPlus	1000L diesel fuel delivery trailer	x	✓
DFT2000 - Trailer 2000L Diesel delivery	GenPlus	2000L diesel fuel delivery trailer	x	✓
TSING - Trailer Single Axle	GenPlus	Trailer Single Axle - suits 9kVA/14kVA/20kVA	x	✓
TDOUB - Trailer Bogey Axle	GenPlus	Trailer Single Axle - suits 40kVA/60kVA/80kVA/100kVA	x	✓
TDOG - Trailer Dog	GenPlus	Suits up to 10 tonne generators. Generators easily slid on and off with the use of tilt tray	x	✓
TSEM - Trailer Semi	GenPlus	Semi-Trailer for transportation	x	✓



Current as at 26 August 2025

Ultra High and High Volume Dewatering (Flood) Pumps

Easily deployable, weatherproof and corrosion resistant. Rate flow of approximately 50,000L/min. Uses diesel fuel. Includes LCD control panel, working lights, warning lights and an emergency stop button.

Product ID	Supplier	Description	Purchase Type	
			Buy	Lease
HS150 FM – Ultra High Volume Dewatering Pump	Bluemont	Hytrans HS150 High Volume Water Supply System with the Hytrans Flood Module Diesel powered hydraulically driven submersible pump system with up to 60m of hose. <ul style="list-style-type: none">Maximum of 50,000 lpm dewatering capabilityIncludes 12" / 300mm lightweight flood hoseIncludes certified lifting hooks for air lift transport	✓	x
HS60 FP – High Volume Dewatering Pump	Bluemont	Hytrans HS60 with Hytrans Flood Pump A 1t skid mobile diesel-hydraulic power pack pump unit with a portable hydraulic driven submersible pump. <ul style="list-style-type: none">Maximum of 20,000 lpm dewatering capabilityIncludes certified lifting hooks for air lift transport or crane liftIncludes 30m of hydraulic hose The system is delivered as a simple skid with 100m of 12" / 300mm Hytrans lightweight flood hose.	✓	x
Sykes S250-380-AR	Coates Hire	High volume Dewatering Pump WTP – Large 3500mm L x 1500 W x 2200H 4250kg net weight 120 kW power output Diesel fuel type 15900 L per minute @ 22m head pump *delivery hose and suction hose not included*	x	✓
Sykes CO300-536-AR	Coates Hire	High volume Dewatering Pump WTP – Large 6500mm L x 2500 W x 3000 H 9900kg wet weight 140kW power output	x	✓



Current as at 26 August 2025

Product ID	Supplier	Description	Purchase Type	
		Diesel fuel type 15900 L per minute @ 22m Head pump *delivery hose and suction hose not included*		
Sykes SW250-380-AR	Coates Hire	Ultra high volume Dewatering pump WTP – large 3500mm : x 1500 W x 2200 H 4250kg wet weight 12 kW power output Diesel fuel type 15900 L per minute @ 22m Head pump *delivery hose and suction hose not included	x	✓
Sykes CP300-536-AR	Coates Hire	Ultra high volume Dewatering pump WTP – large 6500mm L x 2500 x 3000 H 9900kg wet weight 140kW power output Diesel fuel type 18000L per minute @22m head pump *delivery hose and suction hose not included*	x	✓
Suction hose	Coates Hire	Available for: <ul style="list-style-type: none">• Sykes S250-380-AR• Sykes CO300-536-AR• Sykes SW250-380-AR• Sykes CP300-536-AR	x	✓
Delivery Hose	Coates Hire	Available for: <ul style="list-style-type: none">• Sykes S250-380-AR• Sykes CO300-536-AR• Sykes SW250-380-AR• Sykes CP300-536-AR	x	✓



Current as at 26 August 2025

Mobile Mortuary Equipment

Equipment to enable the recovery, identification, examination, and respectful storage of large numbers of deceased people.

Product ID	Supplier	Description	Purchase	
			Buy	Lease
NW.HS	<u>Midmed</u>	Nutwell Logistics – Hardshell 12BSS ResponStar Hardshell Body Storage System 12 x stainless steel body trays, hard shell, freezer, aluminium racking)	✓	x
NW.SS	<u>Midmed</u>	Nutwell Logistics – Softshell 12BSS ResponStar Softshell Body Storage System 12 body capacity, 12 x standard scoops, 1 x trolley system, 1 x refrigerator.	✓	x



Current as at 26 August 2025

Shelter & Camp Solutions

Emergency Shelter Camps – Semi Rigid

Scalable to provide sufficient accommodation for up to 200 people with a minimum of 3.2m² per person. Climate-controlled and includes auxiliary assets for power generation, water purification and sanitation. Camps meet the functional needs of people with a disability, limited mobility and culturally and linguistically diverse communities.

Please note: all camps come with reverse cycle air condition, a container for storage and transport and your organisation's branding.

Product ID	Supplier	Description	Purchase Type	
			Buy	Lease
BL Or BL-OG	Humanihut	Block – optional off-grid capability (BL-OG) <ul style="list-style-type: none">16 huts (2 accessible) – 128 pax capacity4 double bunks per hut (8pax capacity)3 x bathrooms	✓	✓
BC Or BC-OG	Humanihut	Basecamp - optional off-grid capability <ul style="list-style-type: none">32 huts (4 accessible) – 256 pax capacity4 double bunks per hut - 8pax capacity4 x accessible huts6 bathrooms	✓	✓
MA Or MA-OG	Humanihut	Mallee – optional off-grid capability <ul style="list-style-type: none">32 huts total (4 accessible huts)4 double bunks per hut (8pax capacity)4 x accessible huts6 bathrooms	✓	✓
CS	Humanihut	Cooper Skid Copper container capable of configuration as an ablution block and cooper skid life support system with power/water/sewerage systems.	✓	✓
BWS-MFP-PF-UV-CDU-80-H	Humanihut	Built water Solutions MOBILE FLOW PACED Mobile flow paced, pumped, filtration, ultraviolet, chlorine dosing unit – 80Lpm	✓	x



Current as at 26 August 2025

Product ID	Supplier	Description	Purchase Type	
ABL	Humanihut	Accessible bathroom/laundry 20ft HC container split into two spaces with separate entrances to create accessible bathroom and laundry spaces. 1 toilet, 1 shower, 1 sink meeting DDA requirements. 3 washing machines, 3 dryers, 1 washer/dryer combo as well as a basin sink. 2x access ramps included.	✓	x
BM	Humanihut	Bathroom 20ft HC container with two toilets, two showers and two double basin units	✓	x
LD	Humanihut	Laundry 20ft shipping container laundry room with 7 washing machines and 7 dryers	✓	x
20"HCSP	Humanihut	20 foot HC shipping container for storage	✓	x
20"REEF	Humanihut	20 foot refrigerated shipping container	✓	x



Current as at 26 August 2025

Emergency Shelter Camps – Soft Shelter (Tents)

Scalable to support 200 individuals with a minimum floor space of 3.5m² per person. Climate-controlled and include auxiliary assets for power generation, water purification and sanitation. Camps meet the functional needs of people with a disability, limited mobility and culturally and linguistically diverse communities.

Please note, only complete shelter packs have been listed, but individual components are available for most packs. Please contact the relevant supplier for more information.

Product ID	Supplier	Description	Purchase Type	
			Buy	Lease
LOS 8	C3 Systems	Losberger TAG15 2A2D Shelter 2 Arch 2 Door 15m2 4 pax capacity, 15m2, 95kg	✓	x
LOS 9	C3 Systems	Losberger TAG29 3A2D Shelter 3 Arch 2 Door 29m2 8 pax capacity , 29m2, 140kg	✓	x
LOS 10	C3 Systems	Losberger TAG42 4A2D Shelter 4 Arch 2 Door 42m2 12 pax capacity, 42m2, 185kg	✓	x
LOS 11	C3 Systems	Losberger TAG56 5A2D Shelter 5 Arch 2 Door 56m2 16 pax capacity 56m2, 230kg	✓	x
LOS 13	C3 Systems	Losberger DST26 Dual skin inflatable wall shelter base module 7 pax capacity -26m2 - 330kg	✓	x
LOS 14	C3 Systems	Losberger DST39 Dual skin inflatable wall shelter base module 11 pax capacity - 39m2 - 440kg	✓	x
LOS 15	C3 Systems	Losberger DST54 Dual skin inflatable wall shelter base module 15 pax capacity -54m2 - 550kg	✓	x



Current as at 26 August 2025

Product ID	Supplier	Description	Purchase Type	
N/A	Coates Hire	Emergency shelter camps – comes in capacity of 100, 200, 300, 400 or 500 pax. All include: Laundry structure Mess structure Shade structure Sleeping structure (up to 1 pax per structure) HVAC available but priced separately – see below	x	✓
82013	Coates Hire	HVAC air-conditioning/heating unit includes insulated ducting and filters	x	✓
82014		Air conditioner Package 5kw		
84240		Air conditioner Package 100kw		
84235		HVAC ducting 500mm (5m) HVAC ducting *500mm (10m)		
Please note, the number of each lighting/lead required below varies depending on capacity of structure. Please contact Coates Hire for exact details				
N/A Laundry & shade Mess Sleeping	Coates Hire	Lighting and power for structures - various Lighting: LED auditorium lights Leads: 15m extension lead Lighting: LED auditorium lights Leads: 15m extension lead and 3m extension lead – piggy end Lighting: double fluoro Leads: 3m extension lead – piggy end 3m extension lead – piggy end	x	✓



Current as at 26 August 2025

Product ID	Supplier	Description	Purchase Type	
ASAP12	Fire System Supplies	Complete base model ASAP-12 Shelter, 12 x 16 ft (3.66 x 4.88 m)	✓	x
ASAP18	Fire System Supplies	Complete base model ASAP-18 Shelter, 18 x 16 ft (5.49 x 4.88 m)	✓	x
ASAP HUB	Fire System Supplies	Complete base model ASAP-HUB16 Shelter 17 x 17 ft (5.18 x 5.18 m)	✓	x
X Series 16	Fire System Supplies	Complete base model X-16 Aircraft grade aluminium frame 16 x 20 ft (4.87 x 6.10 m)	✓	x
X Series 24	Fire System Supplies	Complete base model X-24 Aircraft grade aluminium frame 24 x 20 ft (7.32 x 6.10 m)	✓	x
X Series 32	Fire System Supplies	Complete base model X-32 Aircraft grade aluminium frame 32 x 20 ft (9.75 x 6.10 m)		
X Series 40	Fire System Supplies	Complete module X-40 Aircraft grade aluminium frame 40 x 20 ft (12.19 x 6.10 m)	✓	x
X Series HUB	Fire System Supplies	Complete base model X-HUB Aircraft grade aluminium frame 22.03 x 22.03 ft (6.71 x 6.71 m)	✓	x



Current as at 26 August 2025

Product ID	Supplier	Description	Purchase Type	
All Hannagan Solutions soft shelter capabilities include: sun cover, inner insulation, pegs & accessories and comprehensive spares kit, light system and heater/cooler				
Inflatable soft shelter 200 pax 100 pax 50 pax	Hannagan Solutions	Soft shelter inflatable tent system – comes in capacities of 200, 100, 50 person 14 x AZF56 NEMA tents 7 x AZF56 NEMA tents 4 x AZF56 NEMA tents	✓	x
Exoskeleton Soft Shelter 200 pax 100 pax 50 pax	Hannagan Solutions	Soft shelter exoskeleton tent system – comes in capacities of 200, 100, 50 person 14 x RDTS54 NEMA tents 7 x RDTS54 NEMA tents 4 x RDTS54 NEMA	✓	x
Soft shelter kit complete AZF56 NEMA RDTS54 NEMA	Hannagan Solutions	Additional tents & flooring can be ordered with a 200,100 or a 50 person soft shelter inflatable tent system. 1 x LANCO AZF56 NEMA soft shelter inflatable tent. Complete with sun cover, inner insulation liner and accessories. 1 x LANCO RDTS54 NEMA soft shelter inflatable tent. Complete with sun cover, inner insulation liner and accessories	✓	x
NEMA Tent floor Kit 75m2	Hannagan Solutions	1 x 75 m2 LANCO Floor Pro - hard floor tiles -15 tiles per sqm - tile size 406 x 166 x 18.3mm Additional tents & flooring can be ordered with a 200,100 or a 50 person soft shelter inflatable tent system.	✓	x



Current as at 26 August 2025

Ancillary & Independent Equipment for Emergency Shelter Camps

Potable Drinking Water

Solutions to produce drinking water from seawater (35,000ppm salinity). Nominal minimum required capacity is 200 people at 45 litres per day, or 9m³ per 'day' of operation.

Product ID	Supplier	Description	Purchase Type	
			Buy	Lease
BD10	Bluemont	Solar powered sea water desalination module <ul style="list-style-type: none">Self-contained containerisedUp to 10,000 litres per dayWater quality less than 500 ppm salinity.	✓	x
PDW 01	C3 Systems	MMW BLUEBOX 60 RO 1,440 litres/day Light Mobile Reverse Osmosis Water Purification Unit	✓	x
PDW 02	C3 Systems	MMW BLUEBOX 140 RO DESAL 3,360 litres/day Compact Mobile Reverse Osmosis Desalination Unit	✓	x
PDW 03	C3 Systems	MMW BLUEBOX 450 RO 10,800 litres/day Mobile Reverse Osmosis Water Purification Unit	✓	x
PDW 04	C3 Systems	MMW BLUEBOX 450 RO / 200DESAL 10,800 litres/day fresh water / 4,800 litres/day seawater Mobile Reverse Osmosis Water Purification Unit	✓	x
PDW 05	C3 Systems	MMW BLUEBOX 1200 RO/RORS 28,800 litres/day Mobile Reverse Osmosis Water Purification Unit	✓	x
PDW 06	C3 Systems	MMW BLUEBOX 4000UF 96,600 litres/day Mobile Ultrafiltration Water Purification Unit	✓	x
PDW 09	C3 Systems	GENAQ CUMULUS C50 52 litres/day Water From Air Generation Unit	✓	x



Current as at 26 August 2025

Product ID	Supplier	Description	Purchase Type	
PDW 10	C3 Systems	GENAQ CUMULUS C500 502 litres/day Water From Air Generation Unit	✓	x
PDW 11	C3 Systems	GENAQ CUMULUS C5000 5,091 litres/day Water From Air Generation Unit	✓	x
PDW 12	C3 Systems	GENAQ CUMULUS C5000-CO 5,091 litres/day Water From Air Generation Unit	✓	x



Current as at 26 August 2025

Ablution Facilities

One or more toilet, shower and hand washing basin, per 10 people, (20+ for a 200 person capacity shelter option). Provide privacy in line with users' expectations and be safe to use for all of the population.

Product ID	Supplier	Description	Purchase	
			Buy	Lease
WLAW2TK 5	Fire System Supplies	Auto wrap double field toilet - 50 hz Kit <ul style="list-style-type: none">Absorbent polymer powder, 200 flushes2 Auto-wrap toilet system2 120V AC power cord2 75 W/hr lithium-ion battery, 950 flushes4 Continuous plastic waste bag rolls, 50 flushes/roll2 Portable commode tent with bag and stake kit1 Best Case by DLX™ Black 127.33 x 63.50 x 63.50 cm	✓	x
WLAWTK5 0	Fire System Supplies	Auto wrap field toilet - 50 hz kit <ul style="list-style-type: none">Portable commode tent with bag and stake kitAbsorbent polymer powder, 100 flushes100-Watt lithium-ion battery, 50 flushes1 Auto-wrap toilet system1 Power cord2 Continuous plastic waste bag rolls, 50 flushes/roll1 Best Case by DLX™ Black 37 x 25 x 24 in (86.61 x 57.91 x 56.20 cm)	✓	x
WLFSM2B 50	Fire System Supplies	Auto wrap double field toilet - 50 HZ Kit <ul style="list-style-type: none">Absorbent polymer powder, 200 flushes2 Auto-wrap toilet system2 120V AC power cord2 75 W/hr lithium-ion battery, 950 flushes4 Continuous plastic waste bag rolls, 50 flushes/roll2 Portable commode tent with bag and stake kit1 Best Case by DLX™ Black 50 x 25 x 25 in (127.33 x 63.50 x 63.50 cm)	✓	x
WLAWR10 0	Fire System Supplies	Auto wrap toilet refill <ul style="list-style-type: none">Absorbent polymer powder, 100 flushes2 x Continuous plastic waste bag, 100 flushes/roll	✓	x



Current as at 26 August 2025

Product ID	Supplier	Description	Purchase	
WLFS1B5 0	Fire System Supplies	Single metal sink - 50HZ Kit <ul style="list-style-type: none">1 Single-basin metal sink with mirror1 Red supply hose1 Blue supply hose1 Black drain hose1 Drain pump with switch1 Carry bag	✓	x
Ablution facilities	Global Defence Solutions	Containerised shower module includes water refuse system	✓	x
Ablution facilities	Global Defence Solutions	Restricted mobility access shower module	✓	x

Laundry Facilities

Relocatable laundry units (washing and drying). Should include lighting and adequate ventilation. One washing machine per 25 people and 1 dryer per 50 people.

Product ID	Supplier	Description	Purchase	
			Buy	Lease
PFL03999	Global Defence Solutions	Field deployable laundry platform c/w integrated 9kVA generator	✓	x



Current as at 26 August 2025

Relocatable Storage Solutions

Mobile storage units, Rubhall, Wiikhall or similar style tented warehouses) or options such as the lease (per unit, per day) or outright purchase of shipping containers, including refrigerated containers.

Product ID	Supplier	Description	Purchase	
			Buy	Lease
LOS 13	C3 Systems	Losberger TMM105 Shelter 6 Arch 4 Door 105m2	✓	x
LOS 15	C3 Systems	Losberger TMM Inflator	✓	x
Biketrack 8	C3 Systems	Biketrack BTS-ICMS Flooring tile 50mm x 1.22m x 1.07m (1.3m2)	✓	x
Biketrack 9	C3 Systems	Biketrack BTS-NICMS Flooring tile 25mm x 1.22m x 1.07m (1.3m2)	✓	x
Biketrack 10	C3 Systems	Biketrack BTS-ONE-S Flooring tile 25mm x 1.22m x 1.07m (1.3m2)	✓	x
AAR & SSU 21	C3 Systems	AAR HiSec Container ISU High Security Storage Container	✓	x
AAR & SSU 2	C3 Systems	AAR EISU EISU 4 door storage container	✓	x
AAR & SSU 23	C3 Systems	ISU 4 Door Storage Container	✓	x
31825	Coates Hire	Container 3 x 2.4m	x	✓
31840	Coates Hire	Container 6 x 2.4m	x	✓
31830	Coates Hire	Container 3 x 2.4m	x	✓
N/A	Coates Hire	Mobile cool room	x	✓
N/A	Coates Hire	20ft reefer containers	x	✓
20F-ISO	KB Logistics	Standard 20 Foot ISO Container	✓	x
20F-ISOR	KB Logistics	Standard 20 Foot ISO Container – Refrigerated	✓	x
40F-ISO	KB Logistics	Standard 40 Foot ISO Container	✓	x
40F-ISOR	KB Logistics	Standard 40 Foot ISO Container –Refrigerated	✓	x



Current as at 26 August 2025

Product ID	Supplier	Description	Purchase	
Cargo C55D5LC-2 16mm/10/63/C EE RB8-6 32A PSOA -IP55 BLOC	Toll Remote Logistics	Complete Relocatable Storage Solution Contains: <ul style="list-style-type: none">• Cargo• C55D5LC-2• 16mm/10/63/CEE• RB8-6 32A PSOA -IP55• BLOC	✓	x
Cargo	Toll Remote Logistics	15m x 20m Structure HR-Structures Cargo Structure 4.2m side height, with Thermo Roofs, steel sheet walling 1 x 5m roller door & 1 PA Door + 6 UFO Lights	✓	x
C55D5LC-2	Toll Remote Logistics	55kVA Generator+B59:O60 Cummins Heavy Duty Power command control system 372 Ltr Bundled, 3 phase /415V	✓	x
16mm/10/63/C EE	Toll Remote Logistics	3 Phase power lead 10m Powersafe 63A 5 pin CEE form plug 7 socket P67 using 16mm H07 Rubber Flex	✓	x
RB8-6 32A PSOA -IP55	Toll Remote Logistics	6 x 240v single phase power board Powersafe 6 x 240V single phase power with individually RCD Protected	✓	x
BLOC	Toll Remote Logistics	1000L Self Bundled Fuel Storage Tank	✓	x



Current as at 26 August 2025

Emergency Responses & Associated services

Emergency Response Logistics and Specialist Humanitarian Services

Emergency, disaster and humanitarian logistics services that specialises in organising the delivery of goods and services and supplies during natural disasters or emergencies. Humanitarian specialists with expertise in implementing disaster response activities.

Resource Category	Guiding Descriptors	Suppliers
A	Senior Manager / Specialist Humanitarian Adviser	Red R Australia Respond Global
B	Manager/Specialist <ul style="list-style-type: none">- Team Leader/Panning coordinator- Logistics Lead	Red R Australia Respond Global
C	Operational Lead <ul style="list-style-type: none">- Project Manager- Site Planner- Trades (Electrician, Plumbers, Mechanic, etc.)- Logistics Planner- WASH Officer- GEDSI/Protection Officer- Human Resource Management (e.g. Roster Management)- Logistics Officer	Red R Australia Respond Global
D	Operations <ul style="list-style-type: none">- Administration/Clerical Support- Project Support- Procurement Officer	Red R Australia Respond Global



Current as at 26 August 2025

Enhanced Supply Chain Services

Capability to procure goods and services from the supplier's extended industry sources/supply chain.

Resource Category	Guiding Descriptors	Supplier
A	Senior Manager - Engineering/Technical Lead 15+ years experience, CPEng, RPEQ, NER	Anywise Consulting Pty Ltd
B	Manager/Specialist - Principal Project Manager 15+ years experience, Bachelor of Engineering, CPEng, RPEQ, NER	Anywise Consulting Pty Ltd
	Senior Project Manager 12-15 years experience, Bachelor of Engineering, CPEng, RPEQ, NER	Anywise Consulting Pty Ltd
	Project Manager 8-12 years experience, Bachelor of Engineering	Anywise Consulting Pty Ltd
	Senior Project Engineer 6-8 years experience, Bachelor of Engineering	Anywise Consulting Pty Ltd
	Project Engineer 4-6 years experience, Bachelor of Engineering	Anywise Consulting Pty Ltd
	Site Engineer 2-4 years experience, Bachelor of Engineering	Anywise Consulting Pty Ltd
	Graduate Engineer less than 2 years experience, Bachelor of Engineering	Anywise Consulting Pty Ltd
	Ecologist / Environmental Scientist Bachelor of Science/ Environmental Engineering. 10+ years experience	Anywise Consulting Pty Ltd
	Commercial/Legal Manager Bachelor of Law/Masters of Construction Law. 15+ years experience	Anywise Consulting Pty Ltd
C	Operations - Administration/Clerical Support - Project Support	Anywise Consulting Pty Ltd



Current as at 26 August 2025

Engineering and Technical Services

Qualified and professional engineering and technical personnel to support immediate emergency response and immediate technical support.

Resource Category	Guiding Descriptors	Suppliers
A	Engineer 15+ years experience, CPEng, RPEQ, NER	Anywise Consulting Pty Ltd McGloin Baker
B	Manager/Specialist - Principal Project Manager 15+ years experience, Bachelor of Engineering, CPEng, RPEQ, NER	Anywise Consulting Pty Ltd McGloin Baker
	Senior Project Manager 12-15 years experience, Bachelor of Engineering, CPEng, RPEQ, NER	Anywise Consulting Pty Ltd McGloin Baker
	Project Manager 8-12 years experience, Bachelor of Engineering	Anywise Consulting Pty Ltd McGloin Baker
	Senior Project Engineer 6-8 years experience, Bachelor of Engineering	Anywise Consulting Pty Ltd McGloin Baker
	Project Engineer 4-6 years experience, Bachelor of Engineering	Anywise Consulting Pty Ltd McGloin Baker
	Site Engineer 2-4 years experience, Bachelor of Engineering	Anywise Consulting Pty Ltd McGloin Baker
	Ecologist / Environmental Scientist Bachelor of Science/ Environmental Engineering. 10+ years experience	Anywise Consulting Pty Ltd McGloin Baker
	Commercial/Legal Manager Bachelor of Law/Masters of Construction Law. 15+ years experience	Anywise Consulting Pty Ltd McGloin Baker
C	Operations - Administration/Clerical Support - Project Support	Anywise Consulting Pty Ltd McGloin Baker



Current as at 26 August 2025

Other Services

Service	Supplier
<u>Camp Establishment and De-Establishment Services - Semi-Rigid Shelters</u> The establishment and de-establishment of semi rigid camps	Coates Hire Operations Humanihut OPEC Systems Toll Remote Logistics Ventia
<u>Camp Establishment and De-Establishment Services – Soft Shelter (Tents)</u> <i>The establishment and de-establishment of soft shelter camps.</i>	Coates Hire Operations OPEC Systems Toll Remote Logistics Ventia
<u>Establishment, Installation, Operation and De-establishment of Ablution Units and Sanitation Facilities</u> <i>The establishment operation and de-establishment of water treatment equipment, deployed with, or independently of, emergency shelters.</i>	Humanihut Ventia
<u>Establishment, Installation, Operation and De-establishment of Laundry Facilities</u> <i>The establishment, operation and de-establishment of laundry equipment, deployed with, or independently of, emergency shelters.</i>	Coates Hire Operations Humanihut OPEC Systems Toll Remote Logistics Ventia
<u>Establishment, Installation, Operation and De-establishment of Power Generation Equipment</u> <i>The establishment, operation and de-establishment of power generation equipment, deployed with, or independently of, emergency shelter units, may require the provision of appropriately qualified and trained technical and non-technical personnel.</i>	Coates Hire Operations GenPlus Hire Humanihut Toll Remote Logistics Ventia

Current as at 26 August 2025

[illegible]



Current as at 26 August 2025

Warehousing & Logistics

Warehousing of Goods purchased through the NEMS Panel and Other Goods & Associated Services

Flexible short term or long-term storage. A pallet is considered to have nominal dimensions of less than 1200mm x 1200mm x 1200mm and a maximum weight of 500kg.

Product	Warehouse Type	Comment/Clarification	Suppliers
Load / Unload per Standard Australian Pallet (MHE)	Internal & external storage	Priced per house and per store person/forklift	KB Logistics Linfox Simon Transport
Load/Unload 20' ISO Container of non-palletised cargo	Internal & external storage	Priced per house and per store person/forklift	KB Logistics Linfox Simon Transport
Load/Unload 40' ISO Container of non-palletised cargo	Internal & external storage	Priced per house and per store person/forklift	KB Logistics Linfox Simon Transport
Urgent Order Fulfilment / After Hours Surcharge (if any)	Internal & external storage	Min charge 4 hrs	KB Logistics Linfox Simon Transport
Provision of Standard ISPM 15 Hardwood Pallet (not CHEP)	Internal & external storage	Priced per unit, minimum quantities will apply dependant on supplier	KB Logistics Linfox Simon Transport
Provision of Wrapping, Strapping and Labelling (material)	Internal & external storage	Priced per pallet	KB Logistics Linfox Simon Transport
Palletisation of Loose Stocks per Pallet (labour)	Internal & external storage	Priced per hour	KB Logistics Linfox Simon Transport
Stocktake and minor works per person per hour	Internal & external storage	Priced per hour and per store person/forklift	KB Logistics Linfox Simon Transport



Current as at 26 August 2025

Weekly Storage Fee 1 Pallet	Covered internal storage	Priced as weekly fee per pallet	KB Logistics Linfox Simon Transport
Weekly Storage Fee m2 Internal Storage	Covered internal storage	Priced as weekly fee per m ² footprint of storage item	KB Logistics Linfox Simon Transport
Weekly Storage Fee m2 External Storage	External storage	Priced as weekly fee per m ² footprint of storage item	KB Logistics Simon Transport
Monthly Storage Fee 1 Pallet	Covered internal storage		KB Logistics Linfox
Monthly Storage fee m2 Internal storage	Covered internal storage		KB Logistics Linfox
Monthly Storage fee m2 External storage	External Storage		KB Logistics



Current as at 26 August 2025

Warehousing Suppliers & Services

Warehousing services such as security, order fulfilment, inventory management and reporting.

State	Supplier	Address
QLD	Linfox	Cairns, QLD 4870
		Mackay, QLD 4740
		Richlands, QLD 4077
		Rockhampton, QLD 4700
		Townsville, QLD 4810
		Willawong, QLD 4110
	Simons Transport	Mount St John, QLD 4818
		Carole Park QLD 430
	Toll Remote Logistics	Whyte Island, QLD 4178
		Richlands QLD 4077
NSW	Linfox	Albury, NSW 2640
		Erskine Park, NSW 2759
		Parkes, NSW 2870
	Simons Transport	Moorebank NSW 2170
	Toll Remote Logistics	Eastern Creek NSW 2766
		Arndell Park NSW 2148
VIC	KB Logistics	Lemnos, VIC, 3631
	Linfox	Laverton, VIC 3028
	Simons Transport	Braeside VIC 3195
	Toll Remote Logistics	Laverton North VIC 3026
		Tullamarine VIC 3043
		Truganina VIC 3029
TAS	Please contact individual suppliers as some may have sub-contractors providing warehousing services in Tasmania	
SA	Humanihut	ADDRESS TBC



Current as at 26 August 2025

	Linfox	Regency Park, SA 5010 Wingfield, SA 5013
	Simons Transport	Wingfield SA 5013
	Toll Remote Logistics	Gepps Cross SA 5094
WA	Linfox	Kewdale, WA 6105 Maddington, WA 6109
	Simons Transport	Kewdale WA 6105
	Toll Remote Logistics	Welshpool WA 6106
NT	Linfox	Darwin NT 0822
	Simons Transport	Darwin NT 0822



Current as at 26 August 2025

Transportation & Freight of Goods purchased through the NEMS Panel

Respondents should provide timely, efficient, effective and safe, surface transportation of goods between regional and remote locations.

The suppliers noted below offer transportation around Australia, including Tasmania.

Please contact individual suppliers for costings, details on route and transport type availability.

Price quote is based on best of the day

- [Energy LogistiX](#)
- [Humanihut](#)
- [Linfox](#)
- [Simon Transport](#)
- [Toll Remote Logistics](#)



Current as at 26 August 2025

Bundled Goods & Services

Supplier	Services	Description
Anywise Consulting	Capability Assurance Services	A range of activities to plan, test and optimise capability bricks to ensure they are ready and prepared to be delivered when required.
	Industry Planning Partnership	A team of specialists that are engaged to develop commercial response options in parallel to NEMA operational planners. This provides additional capacity and flexibility during the planning phases.
	Surge operational and logistics specialist teams	Surge operational and logistics specialist teams, providing high readiness, trained specialists to assist in the final planning, coordination and initial mobilisation stages.
Humanihut	Project Management	Plan, coordinate and manage project and to provide contract management each deployment
	Emergency establishment and disestablishment of One (1) camp	<p>Services for the establishment and disestablishment (assembly and fit-out) of a camp service includes nine (9) resources</p> <p>The offered price does not include travel to/from site or subsistence for the services providers. These costs will be calculated according to the Australian Taxation Office Taxation Determination 2023/3 available at td2023-003.pdf</p>
	Camp sustainment	Onsite maintenance manager self-catered per camp/month
Linfox	Procurement as a service	<p>Linfox can provide procurement as a service.</p> <p>Enhanced Supply Chain services involves the strategic coordination and optimisation of every touch point within a supply chain, from procurement warehousing and subsequent distribution.</p> <p>Linfox coordinates procurement activities with Commonwealth oversight and approval but it is not party to supply contracts.</p>



Current as at 26 August 2025

Appendix A – List of Suppliers & Descriptions

Anywise Consulting

Anywise Consulting provides an enhanced supply chain service which allows Panel buyers to use Anywise's purchasing expertise to source goods and services which are not readily available off the Panel. Anywise also provides specialist engineers to solve technical issues in the following areas:

- Mechanical Engineering
- Systems Engineering
- Verification and Validation Engineering
- Environmental Engineering
- Mechatronics Engineering, and
- Software Engineering



Website: <https://www.anywise.com.au/>



Current as at 26 August 2025

Aspen Medical

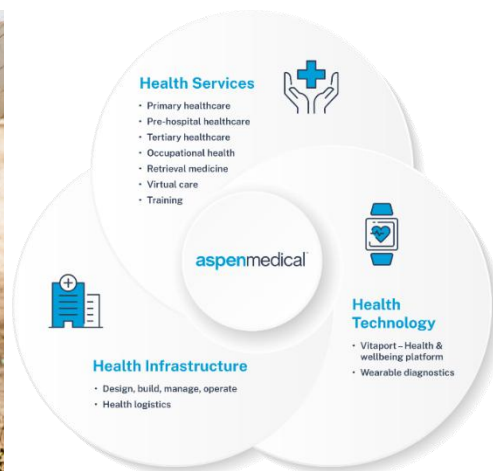
Aspen Medical is an Australian-owned company that delivers comprehensive healthcare solutions across the full spectrum of health services, infrastructure and technology.

We operate in challenging environments—remote, under-resourced and high-risk—and work globally with governments, industries and communities to address urgent needs and contribute to long-term health outcomes.

Our work spans the delivery of essential health services, development and management of critical health infrastructure and integration of technologies to improve access, quality and efficiency in care. Whether establishing health programs in underserved regions, responding to health emergencies or supporting system-wide improvements, our approach is always outcomes-focused and grounded in cultural safety, clinical governance and reliability.

Since our founding in 2003, Aspen Medical has evolved from a Canberra-based start-up to a certified B Corporation recognised for strengthening health systems worldwide. Our multidisciplinary teams, comprising clinicians, planners, technologists, project managers, logisticians and policy experts, collaborate to deliver scalable, sustainable solutions that make a meaningful impact.

At Aspen Medical, we don't just deliver care, we enhance the environments that enable health. We build partnerships, develop local capacity and support the systems that keep people well—wherever you need us.



Aspen Medical offers emergency response logistics and specialist humanitarian services

Website: www.aspenmedical.com/



Current as at 26 August 2025

Bluemont

Bluemont is an Australian owned family-based company that specialises in providing proven environmental solutions from around the world to Australia for over 20 years.

Boxwall Mobile Flood Barriers:

The Boxwall mobile Flood barrier is the fastest barrier to deploy, 100m in 30 minutes. From Sweden, proven globally, supplied locally in Australia. European technology saving us from floods, one Boxwall at a time.

Desalination:

Elemental Water Makes from the Netherlands make the first Desalination system that is 100% chemical free and can be powered 100% by solar. Supplied to more than 30 countries globally. More than 2,500,000 cubic metres of fresh water provided to more than 150,000 people in need. Containerised desalination systems that produce from 1,000 litres of potable water per day to 10,000 litres of potable water per day.

Flood Pumps:

Hytrans is the Dutch manufacturer of the Hytrans high volume dewatering system, mobile flood pumps from 20,000lpm top 50,000lpm. Providing globally proven mobile water supply capabilities to Fire Brigades and governments since 1964.



Bluemont Boxwall Flood Barriers – (click link to find in Catalogue)



National Emergency Management Agency

OFFICIAL



Current as at 26 August 2025

Bluemont Elemental Desalination water makers



Bluemont [HyTrans dewatering pump](https://www.bluemont.com.au/)

Website: <https://www.bluemont.com.au/>



Current as at 26 August 2025

C3 Systems

C3 Systems is a veteran owned, Australian SME based in the ACT and SE QLD, with proven expertise in rapidly deployable infrastructure with our solutions and products tested and proven to excel in challenging environments.

Our deployable infrastructure systems are scalable, modular, robust, and easily transported by road, rail, water, and air with our systems having the ability to be underslung from a rotary winged aircraft. C3 Systems has proven experience in challenging and remote humanitarian and military environments.

These products will save time and money over the entire term of your deployment and help deliver exceptional capability in the field and in adverse conditions.

C3 Systems offers over 50 discreet products, including soft shelters, power generation, storage, lighting, flooring, electrical systems, fuel storage, water generation, and filtration systems. Our highly deployable, scalable, modular, robust, and energy-efficient hard and soft shelter systems are suitable for various environments, such as expeditionary and emergency accommodation. We specialize in integrating principal equipment and supporting infrastructure interfaces.



C3 Systems [Fuel tank](#) (left) and [Generators](#) (right)



C3 Systems [Solar Generator](#) (left) and [Water purifier](#) (right)



Current as at 26 August 2025

Website: <https://c3systems.com.au/>

CE Bartlett

Established in 1956, Bartlett Manufacturing is a nationally and internationally recognised leader in industrial textile product manufacturing. The Bartlett business operates in Ballarat Victoria with production facilities spanning across three separate sites and four factories. Our industrial textile products are sold to a vast range of industries, with hundreds of different end uses.

We take enormous pride in our ability to adapt existing products and develop new products to meet the ever-changing needs of our customers, or to take advantage of the latest fabric technologies.

Within our industry we lead the way in developing new fabrication and sealing techniques, resulting in quality products that continually exceed customer expectations.

The continual growth of the Bartlett business and brand is based on our total commitment to service and quality, along with the ongoing re-investment in new technologies.



CE Bartlett offer [synthetic pit linings for animal carcasses](#)

Website: <https://bartlett.net.au/>



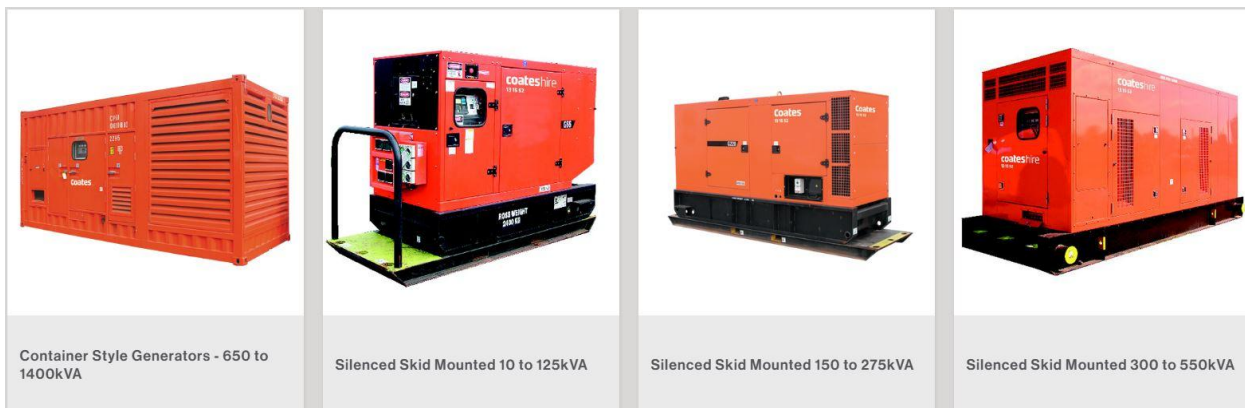
Current as at 26 August 2025

Coates Hire

Coates is Australia's leading equipment hire and solutions provider. With over 145 branches nationwide, a national logistics network and 2,000 highly skilled employees, Coates delivers end-to-end solutions across industries including Defence, Government & Emergency Response; Civil Engineering & Construction; Energy, Renewables & Utilities; and Mining, Oil & Gas.

With a long history of working with agencies like the NSW RFS and SES during natural disasters, Coates provides rapid deployment of essential equipment and end-to-end site solutions. Through the NEMS Panel, agencies can access a wide range of equipment and specialist services including power generation equipment (establishment, installation, operation and demobilisation), dewatering (flood) pumps, fuel storage, storage containers, marquees and setup and breakdown of semi-rigid shelters and tents in camps.

In 2025, Coates celebrates 140 years of supporting customers who help build Australia and protect communities. With proven emergency response experience, Coates is ready to support you when it matters most.



Coates supplies [high output generators and fuel storage](#), [dewatering pumps](#), [emergency shelter camps – soft shelter](#), [relocatable storage solutions](#) and [other services](#)

Website: <https://www.coates.com.au/>



Current as at 26 August 2025

DomeShelter

DomeShelter Australia is a sovereign manufacturer supporting Australian industry with engineered, proven Shelter Solutions. With over 30 years of experience and more than 8,500 structures delivered globally, we specialise in modular, relocatable Fabric DomeShelter™ Structures designed for rapid deployment in crisis scenarios. Built to Australian standards and tested in extreme environments, our Shelter Solutions are trusted by many clients in emergency services, Defence, logistics, and remote mining operations. The Shelters provide immediate protection for people, equipment, and critical infrastructure — ensuring resilience, adaptability, and operational continuity when it matters most. We are proudly Australian made, owned, and operated.



DomeShelter [soft shelter \(tent\)](#)

Website: <https://www.domeshelter.com.au/>



Current as at 26 August 2025

Energy LogistiX

Energy LogistiX (ELX) is a proudly Australian-owned supply chain partner delivering tailored logistics and warehousing solutions for Defence, Emergency Response, and Remote Site Support across Australia.

We operate at the **tip of the spear** in critical supply chain management—mobilising quickly, safely, and with precision in high-risk, time-sensitive environments. From secure freight to compliant, scalable storage, ELX is built for mission-critical outcomes.

We are proud to support the National Emergency Management Stockpile and Defence readiness programs, aligning with Australia's strategic resilience goals. Our *Mission 0* initiative drives a culture of zero harm—protecting people, communities, and the environment.

Driven by a relentless pursuit of excellence, ELX strives to be the **best at what we do**—trusted, values-led, and ready 24/7.



Energy LogistiX offer [warehousing](#) and [associated services](#) and [transportation](#)

Website: www.energylogistix.com.au



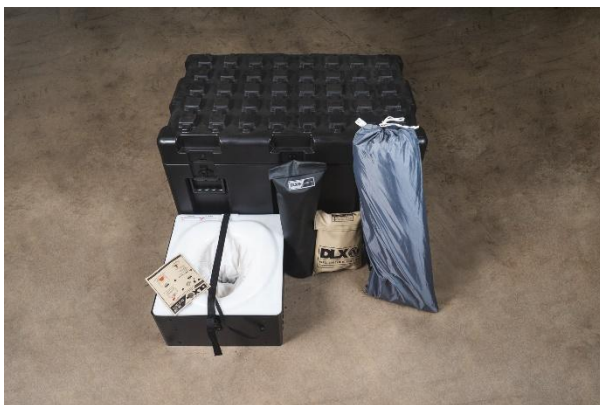
Current as at 26 August 2025

Fire System Supplies

Fire System Supplies are the Australian Distributor for the Deployed Logix range of equipment manufactured in Oregon USA.

These products include –ASAP – 18 Rapid deployable Shelters along with climate control, Power, Water handling, Hygiene including Ablution and Shower options.

DLX develops innovative basecamp, power, and deployment products for emergency services, medical and law enforcement. Around the globe, our clients count on us for their mission-specific kits and accessories. And every day we're working on new products that lessen your time deploying so you can focus on what matters: saving lives.



Fire System Supplies offer [emergency shelter camps – soft shelter](#) and [ablution facilities](#)

Website: <http://www.firesystemsupsupplies.com.au/>



Current as at 26 August 2025

GenPlus Hire

GenPlus Hire (genplus.com.au) hire/lease out reliable, portable, single and three-phase diesel generator sets (7kVA (house/power-tools) – 1,450kVA single set (small shopping centre/medium-sized hospital/water treatment plant) with associated fuel cells and fuelling equipment, transfer switches, distribution boards, generator cable sets and power leads. Generators can be paralleled to provide greater output.

Additionally, GenPlus provide a service where they transport, establish, install, operate and de-establish their equipment for whatever length of time a customer requires their services and equipment.

GenPlus' business is based around critical and emergency power and they provide their equipment and services on an Australia-wide basis including remote locations.



GenPlus Hire [generators and accoutrements, providing a complete power solution](http://genplus.com.au) – various capacities available

Website: <https://genplus.com.au/>



Current as at 26 August 2025

Global Defence Solutions (GDS)

When disaster strikes, emergency services need infrastructure that's ready to deploy, proven to work, and built to last. Global Defence Solutions (GDS) systems supply this to first responders, emergency services, and humanitarian operations across Australia. From mobile mortuaries and animal welfare units to emergency accommodation and fully equipped evacuee villages, including toilets, showers, kitchens, laundries, and water reuse systems, we deliver complete, self-sufficient solutions that provide safety and dignity in the wake of disaster.

In thirty years of operations, we have designed, delivered, and supported thousands of units of product that are reliable, fast to deploy, simple to operate, and robust enough to survive use in the toughest environments.

Our mission is to ensure your teams can react quickly, staying focused on saving lives and restoring order while operating from a safe, reliable base with everything they need to live, work, and rest.



GDS offers [laundry facilities](#) (left) and [ablution facilities](#) (right)



GDS offers [soft shelter capabilities](#) (left) and [mobile mortuary](#) (right)

Website: <https://globaldefence.com/>



Current as at 26 August 2025

Hannagan Solutions

Hannagan Solutions Pty Ltd is a family-owned business based in Melbourne. We are the sole distributor for the soft shelter manufacturer LANCO in Australia, New Zealand and the Pacific region and the humanitarian distributor for Dantherm Group HVAC products, Sonaray Lighting and the PACTO waterless toilet in Australia.

Our customers in Australia, New Zealand and the Asia-Pacific include national governments, state public health services, state emergency services and industrial corporations.

Our products are designed to be easy to store and simple to transport. They can be quickly deployed and set up with minimal training, are robust and safe to use in the immediate emergency response to a disaster anywhere in Australia. Our products are made to order to meet the highest quality standards. They have an expected lifetime of 7–10 years when stored correctly. We are also able to assist with cleaning, maintenance and storage at our facility in Victoria.



Hannagan Solutions offer [emergency shelter camps – soft shelter](#) and [relocatable storage solutions](#)

Website: <https://www.hannagansolutions.com.au/>



Current as at 26 August 2025

Humanihut

Humanihut is an Australian-owned company headquartered in Adelaide, operating across Asia Pacific, Europe, the UK, Middle East, and North Africa.

Our patented Humanihut Field Infrastructure System (HFIS) is a unique Australian innovation offering rapidly re-deployable, turnkey infrastructure for workforce accommodation, disaster relief, emergency response, refugee housing and defence. HFIS is scalable, customisable, and capable of operating on-or-off-grid, engineered for speed, adaptability, and resilience.

Designed for rapid deployment, the HFIS integrates all core components, accessories, and utilities. It connects seamlessly to local water, power, and waste systems, or functions independently when infrastructure is unavailable creating a temporary liveable community. All services are installed above ground to minimise environmental impact.

We provide end to end services from camp establishment and site management to dis-establishment, training, inspections, and maintenance; ensuring clients are always operationally ready.

Our dedicated warehousing and inventory management guarantees security, maintenance, and rapid deployment of client assets, nationally and internationally.



Humanihut offers [emergency shelter camps – semi-rigid](#) and [associated services](#), [potable drinking water](#), [ablation](#), [laundry](#), [relocatable storage solutions](#), [transportation](#) and [bundled services](#)

Website: <https://www.humanihut.com/>

National Emergency Management Agency

OFFICIAL



Current as at 26 August 2025

KB Logistics

Kreskas Bros Transport (KBT) is a proud regional Victorian business, based in Shepparton, and a third-generation family-owned company with over 60 years of experience in supply chain management solutions. We specialise in line haul containerised logistics, relocatable storage solutions, warehousing of goods purchased through the NEMS Panel, and broader warehousing services. Our 70,000m² AQIS-registered facility offers cold storage, dry storage, export container packing, import container unpacking, distribution, and customised pick-and-pack solutions.

With HACCP certification, AQIS registration, and expertise in handling export and import container operations, KBT ensures all storage solutions meet strict regulatory and operational standards. We are proud to deliver high-quality container solutions backed by a strong regional workforce, ensuring critical goods are securely stored and rapidly mobilised when needed.



KB Transport offer [warehousing](#) and [associated services](#)

Website: <https://kbtransport.com.au/>



Current as at 26 August 2025

Krisis Protection

Krisis Protection is an Australian-owned company specialising in premium, watertight flood protection solutions. Our flagship product, the *Krisis Flood Bag*, is IPX8-certified and military-grade tested, designed to safeguard household and business contents from floodwater damage. Available in three sizes, the bags provide scalable protection for everything from personal valuables to commercial equipment.

With Krisis Flood Bags warehoused across three Queensland facilities, Krisis is uniquely positioned to support national emergency stockpiles and regional disaster responses. We also offer comprehensive warehousing, fulfilment, and inventory management services.

Built for prevention, not just response, Krisis Flood Bags empower communities, reduce recovery costs, and deliver resilience in a changing climate. Our mission is simple: protect what matters before the waters rise.



Krisis Protection [Krisis Flood Bags](https://krisisbags.com.au/) in size small (left) and large (right)

Website: <https://krisisbags.com.au/>



Current as at 26 August 2025

Linfox

Linfox works with some of the world's largest and most successful organisations, delivering food, resources and medicine across road and rail from an extensive network of warehouses and distribution centres.

The values, systems and technology behind the people, fleet and facilities make Linfox one of the safest and most efficient logistics partners in Asia Pacific.



Linfox offers [transportation](#), [warehousing](#) and [associated services](#)

Website: <https://www.linfox.com/>

McGloin Baker

McGloin Baker is a multidisciplinary civil engineering, environmental management, and project management consultancy operating across Australia. We specialise in disaster recovery, emergency works, and resilient infrastructure delivery, with extensive experience supporting local and state governments. Our team offers expertise in DRFA funding, environmental compliance, stakeholder engagement, and the delivery of technically complex projects under pressure. From rapid impact assessments to full lifecycle project and environmental management, McGloin Baker is trusted for our responsiveness, practical solutions, and commitment to helping communities recover and rebuild stronger.



McGloin Baker offer [engineering and technical services](#)

Website: <https://mcgloinbaker.com.au/>



Current as at 26 August 2025

Midmed

Midmed is a Queensland-based, family-owned supplier of medical and emergency response equipment serving government agencies, hospitals, ambulance services and humanitarian organisations nationwide. For more than 30 years we have partnered with leading global manufacturers to deliver reliable, fit-for-purpose solutions for patient handling, resuscitation, infection control, field hospital infrastructure and specialist consumables. As the exclusive Australian distributor for brands such as Nutwell Logistics, Hartwell Medical, TSG Associates & Medsled we maintain local inventory and a national service and training network to ensure continuity of supply and through-life support, even in austere environments. Operating under ISO 9001, 14001 and 45001 certifications, Midmed has a proven track record supporting state and federal agencies during disaster response and recovery operations. Backed by responsive customer service and deep technical expertise, we provide the equipment - and the confidence - emergency managers need to protect communities.



Midmed offer [Mobile Mortuary Equipment options](#)

Website: midmed.com.au



Current as at 26 August 2025

OPEC Systems

OPEC Systems is an Australian-owned company with over 30 years of experience delivering specialised solutions across the defence, health, and environmental sectors. As the exclusive Australian distributor of AKS Industries' advanced shelter systems, we supply rapid-deployment infrastructure for the world's most demanding environments.

Since 1975, AKS fabric buildings have been tested and proven in over 60 countries and used across a wide range of applications—from UN disaster relief, military and hospital facilities to film locations and remote housing camps.

AKS shelters are modular, energy-efficient and are engineered for durability and speed. The highly mobile and modular XP Shelters can be fully erected in under 15 minutes by a trained crew and are ready to operate with plug-in power and optional ECU climate control. Tested to withstand extreme wind and rain conditions, AKS shelters set the global benchmark for rapid, rugged, and reliable shelter solutions for all applications.



OPEC Systems [AKS soft shelter system](https://opecsystems.com/)

Website: <https://opecsystems.com/>



Current as at 26 August 2025

Pipe Management Australia

Pipe Management Australia (PMA) is the exclusive national distributor and deployment partner for Geodesign Barrier Dams - a globally trusted flood mitigation solution engineered in Sweden and designed for strength, rapid deployment and full reusability.

Built for adaptability, Geodesign Dams conform to a wide range of terrain types and site conditions, making them a reliable defence for critical infrastructure, flood-prone communities and emergency response scenarios.

Proven in the field, right here in Australia, PMA has successfully delivered and deployed Geodesign Barrier Dams for flood protection at key sites including:

- Urban Utilities' Oxley Wastewater Treatment Plant: safeguarding essential water infrastructure
- Maryborough, QLD: as part of a community-wide flood response initiative by council

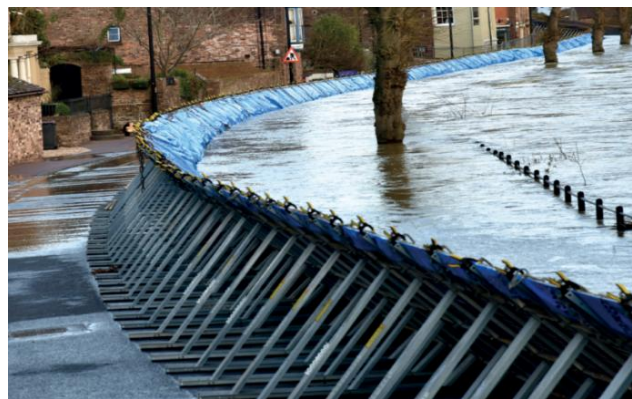
With over a decade of experience, PMA provides full-service delivery including:

- Site assessments
- Tailored deployment planning
- Recommended storage and holding strategies
- Client training and certification

We work closely with local councils, utilities, emergency services and state agencies to ensure the right strategy is in place before the wet season strikes. Our delivery models include outright purchase, flexible lease/hire options and Guaranteed Holding arrangements, tailored to your needs and operational requirements.

From supply and logistics through to on-ground deployment and support, PMA's turnkey capability ensures your Barrier Dam investment is ready to perform under pressure, when it matters most.

Learn more about the Geodesign Flood Barrier Installation by watching the video [here](#).



Pipe Management Australia (PMA) [Geodesign flood barrier](#)

Website: <https://pmaus.com.au/>



Current as at 26 August 2025

Proton Dynamics

Proton Dynamics, established in 2013, provides specialist equipment, maintenance, advisory and training services for defence against CBRNE (chemical, biological, radiological, nuclear and explosive) threats. Our clients include the Australian Defence Force, federal, state and territory law enforcement agencies, and emergency services. Proton Dynamics is a reliable and responsive partner. We ensure value for money and short lead times by sourcing, manufacturing, and servicing locally.

Proton Dynamics provide **Non-Medical Biohazard Kits** and **Body/ Recover Bags** specifically designed for the National Emergency Management Stockpile (NEMS). Our **Non-Medical Biohazard Kits** provide personnel protection from blood-borne pathogens, infectious diseases, and other biohazards often encountered during disaster clean-up operations. Proton Dynamic's **Non-Medical Biohazard Kits** are fully customisable and made to order.

Our **Body and Recovery Bags** are uniquely made in Australia using superior 140 gsm material with high-quality zippers and stitching. These bags are available in various sizes and are designed for both **human and animal remains collection**. Our bags are available at short notice and in exact quantities.



CHEMICAL RESISTANT BODY BAGS



COVERFLEX RECOVERY BODY BAGS



PARMED BODY BAGS

Proton Dynamics [Body Bags](#)



Proton Dynamics [non-medical biohazard kit](#)

National Emergency Management Agency

OFFICIAL



Current as at 26 August 2025

Website: <https://www.protondynamics.com.au/>

RedR Australia

RedR Australia provides expert personnel and training supporting Australian emergency management.

What we offer: Surge expert personnel for emergency management supporting organisations throughout the disaster cycle for short- and long assignments.

Hosting a roster of more than 700 experienced disaster specialists. Our experts are trained and experienced in a wide range of skill profiles, such as coordination, logistics, gender and disability inclusion protection, shelter management and DRM to name a few.

They are vetted professionals with a minimum of five years' technical experience, with most averaging 10–15 years, having worked in international and domestic emergency contexts.

We're also a leading provider of specialised training in the disaster-response sector. Our trainers have experience responding to Australian emergencies such as floods and bushfires, as well as conflict and other major events. They have extensive field experience working in a wide variety of technical, co-ordination and advisory roles across all stages of the disaster cycle.



RedR [Emergency response and associated services](https://www.redr.org.au/home)

Website: <https://www.redr.org.au/home>



Current as at 26 August 2025

Respond Global

Respond Global is a trusted Australian provider of emergency logistics and specialist humanitarian services, offering deployable expertise across disaster, health, and crisis response environments. We deliver rapid, scalable support before and during public health emergencies, natural disasters, and complex humanitarian events. Our multidisciplinary teams—comprising disaster managers, logisticians and base of operations support staff, clinical professionals, and public health specialists—are experienced in providing surge workforce solutions, operational coordination, logistics and response staff support, and emergency response planning. These teams can integrate seamlessly into existing command structures in either leadership or support roles. Respond Global has delivered critical response services during major flood, cyclone, earthquake, bushfire, pandemic, and mass casualty incidents across Australian jurisdictions in support of all three levels of Government and in multiple international contexts.



Respond Global [logisticians and humanitarian specialists](https://respondglobal.com/)

Website: <https://respondglobal.com/>



Current as at 26 August 2025

Simon Transport

Simon Transport offers full-service Domestic supply chain logistics providing a comprehensive end-to-end storage and distribution solution. From container pick up at the wharf, to container unpack, storage, pick, pack and delivery, Simon Transport can do it all.

Full 3PL facilities are located in Townsville, Brisbane, Sydney, Melbourne, Adelaide, Perth and Darwin. A breakdown of services include -

- General, Express, Hot Shot and Full Load freight services for standard pallets through to heavy, high, long and wide movements
- Warehousing, including value added services such as assembly and light manufacturing value add, through to split case, standard pallet picking or high value, hard to handle and fragile item handling services
- Contract Logistics including dedicated fleet for metro or inter/intrastate solutions
- Project Logistics encompassing bulk material movements by consignment including the use of specialised equipment
- Oversize movements encompassing standard and specialised equipment use
- Defence Logistics for suppliers and specialised equipment movements.



Simon Transport [Transport](#) (left) and [Warehousing services](#) (right)

Website: <https://www.simon.com.au/>



Current as at 26 August 2025

Spearpoint Solutions & Technology

Founded in 2006, Spearpoint is an Australian, veteran owned and operated supplier of Integrated Systems, based in Queanbeyan NSW. Spearpoint offers a range of emergency management capabilities, including the DefenCell flood barriers. Used extensively in the SA Murray River floods in 2022, the DefenCell flood barriers consists of 2 types. The DefenCell geotextiles contain no metal and are easy to transport and erect. The DefenCell MAC barriers are gabion systems, inherently sturdy and easy to install. Both come in a range of sizes and shapes. Designed as flood barriers, the systems can also be used for ground stabilisation and hard standing construction. The DefenCell barriers are in extensive use with US FEMA and worldwide.

Spearpoint provides training and support for both products.



Spearpoint Solutions & Technology [DefenCell flood barrier](#)

Website: <https://spearpoint-shop.myshopify.com/>



Current as at 26 August 2025

Toll Remote Logistics

Toll has vast expertise in establishing temporary camps and accommodation at pace and in remote locations, as well as the logistics and supply chain capabilities to enable these camps to function at an optimal level once launched.

Toll has a proven record when it comes to provision of Disaster Recovery Support Services. Under the NEMA Panel, Toll has been authorised to supply a variety of support equipment and services.



Toll offers [sandbags](#), [other flood mitigation barriers](#), [body bags](#), [non-medical biohazard kits](#), [relocatable storage solutions](#), [transport](#), [warehousing and logistic services](#)

Website: <https://www.tollgroup.com/>



Current as at 26 August 2025

Ventia

Ventia is a leading essential infrastructure services provider that makes infrastructure work for communities across Australia and New Zealand. We are an Australian Securities Exchange (ASX) top 200 company, with a secondary listing on New Zealand's Exchange (NZX). We specialise in the long-term operation, maintenance and management of critical public and private assets and infrastructure across a broad range of industry segments including defence and social infrastructure, infrastructure services, telecommunications and transport.

We have a proud and diverse heritage and a track record of delivering tailored outcomes for our clients and the communities in which we operate. Ventia was created in 2015 following the merger of Leighton Contractors Services division, Thiess Services and Visionstream. In 2020 Ventia grew to combine more than 50 years' of industry knowledge and experience with the acquisition of Broadspectrum. Today we have a large and diverse workforce of more than 35,000 people and we operate in over 400 sites across Australia and New Zealand, enabling us to deliver an extensive range of services for our clients and communities.



Ventia offers [enhanced supply chain service](#), [engineering and technical services](#), [camp establishment and de-establishment for semi-rigid and soft shelter](#), [establishment of water purification, ablution, laundry and power generation](#).

Website: <https://www.ventia.com/>



Current as at 26 August 2025

Westlab

Westlab has a proven track record in emergency response, supply chain agility, and product quality assurance. With over \$120M of successful deliveries to the National Medical Stockpile since 2021, Westlab has demonstrated 100% on-time delivery performance and operational excellence in high-pressure environments.

We offer an extensive range of emergency medical, laboratory, and safety equipment and consumables, all validated through rigorous quality control processes and third-party audits. Our global sourcing capability, underpinned by our Six Principles of Sourcing, ensures authenticity, compliance, and surety of supply.

Westlab's scalable operations, robust logistics network, and strong financial stability enable rapid mobilisation to meet urgent, large-scale needs. Eligible entities can rely on Westlab for responsive, dependable, and high-quality supply solutions tailored to the dynamic requirements of emergency management.



Westlab offers [body bags](#) and [non-medical biohazard kits](#)

Website: <https://www.westlab.com.au/>



Current as at 26 August 2025

Version Table

Version	Date	Business Unit	Drafted By	Approved By	Review Date
1.0	13/08/2025	NEMS Panel	Talitha Shaw	Meghan Hibbert	26/08/2025