



# **Public Safety Mobile Broadband (PSMB) Update**

**Industry Briefing  
4 and 5 June 2025**



## Independent PSMB Strategic Review

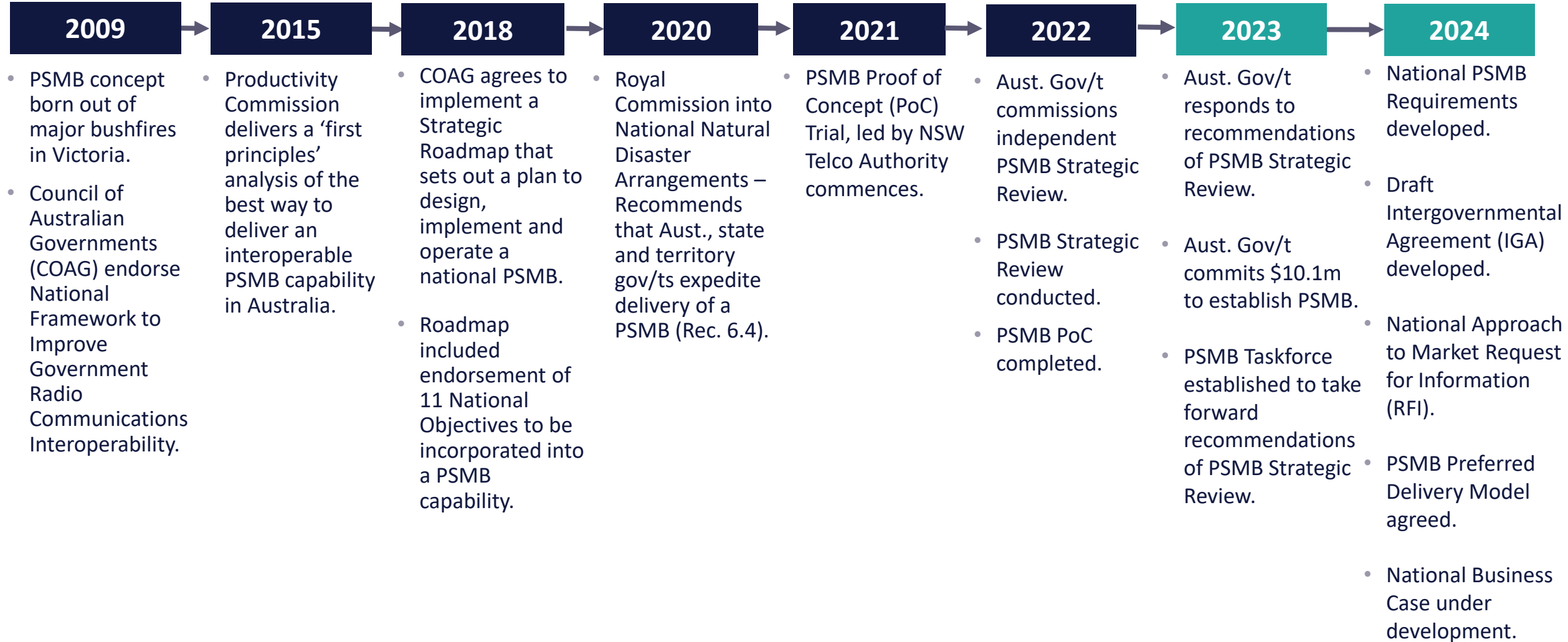
- Conducted February to October 2022.
- Involved extensive, targeted consultation.
- Highlighted the complexity of implementing a PSMB capability.
- Provided a pathway for Australia.
- Recommended the Australian Government:
  - Take a leadership role in driving the delivery of a national PSMB capability.
  - Lead negotiations of an Inter-Governmental Agreement (IGA) with state and territory governments.

**14** Principle Findings  
**12** Recommendations

## Australian Government Response

- Agreed, or agreed in principle, to all 12 recommendations.
- Committed \$10.1 million to establish and fund the operations of a PSMB Taskforce over 2023-24 and 2024-25 financial years.
- 2025 Budget announced \$5.4 million to move to Delivery Phase (subject to Government agreement).

The Final Report of the 2022 PSMB Strategic Review and the Australian Government's Response are available at <https://nema.gov.au/Public-Safety-Mobile-Broadband>





## RFI Outcomes

### Findings & Outcomes

- ✓ Strong response from industry, confirming interest in participating in Australia's PSMB and a good understanding of first responder requirements
- ✓ Technology available to deliver target PSMB outcomes
- ✓ Enabled development of multiple delivery models, with a preferred model selected for further development
- ✓ Costing of PSMB capability produced at Rough Order of Magnitude level

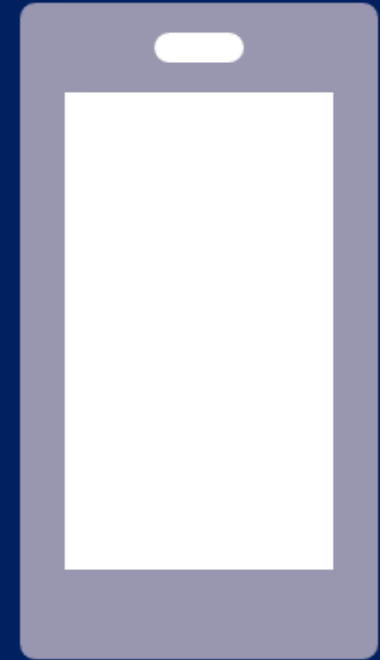
### Further Work

- Highlighted additional areas of interest for PSMB to provide access to broadband data for regional and remote agencies
- Market is dynamic. Key technologies and services continue to evolve
- Develop agreed model for National PSMB Entity (NPE)



## The PSMB is ...

- A trusted, reliable, secure, prioritised national mobile data service for Public Safety Agencies (PSAs)
- Enables PSAs to:
  - Send and receive video and images in real-time
  - Use data-based applications such as mapping, detailed location, situational awareness etc.
  - Communicate using voice, image, video and data between agencies and across states
- Complementary and integrated with voice radio networks
- Made possible through a national coordinated approach







## The Case for Change

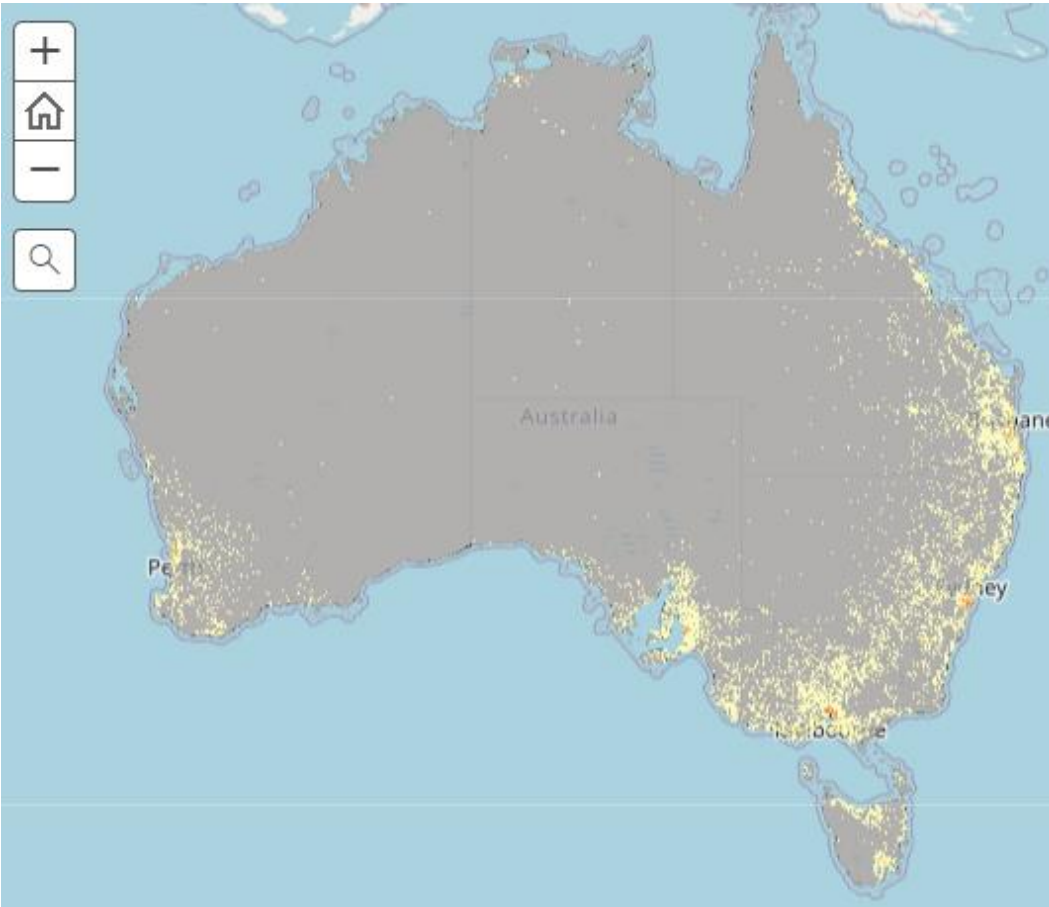
The current situation summarised by five problem statements:

1. Commercial mobile broadband doesn't fully meet the needs of PSAs in emergencies
2. Limited interoperability of communications between PSAs restricts their ability to share information and coordinate responses
3. PSAs cannot fully utilise new technologies
4. PSAs have limited visibility of communication network outages
5. The approach to network resilience and interoperability has been localised

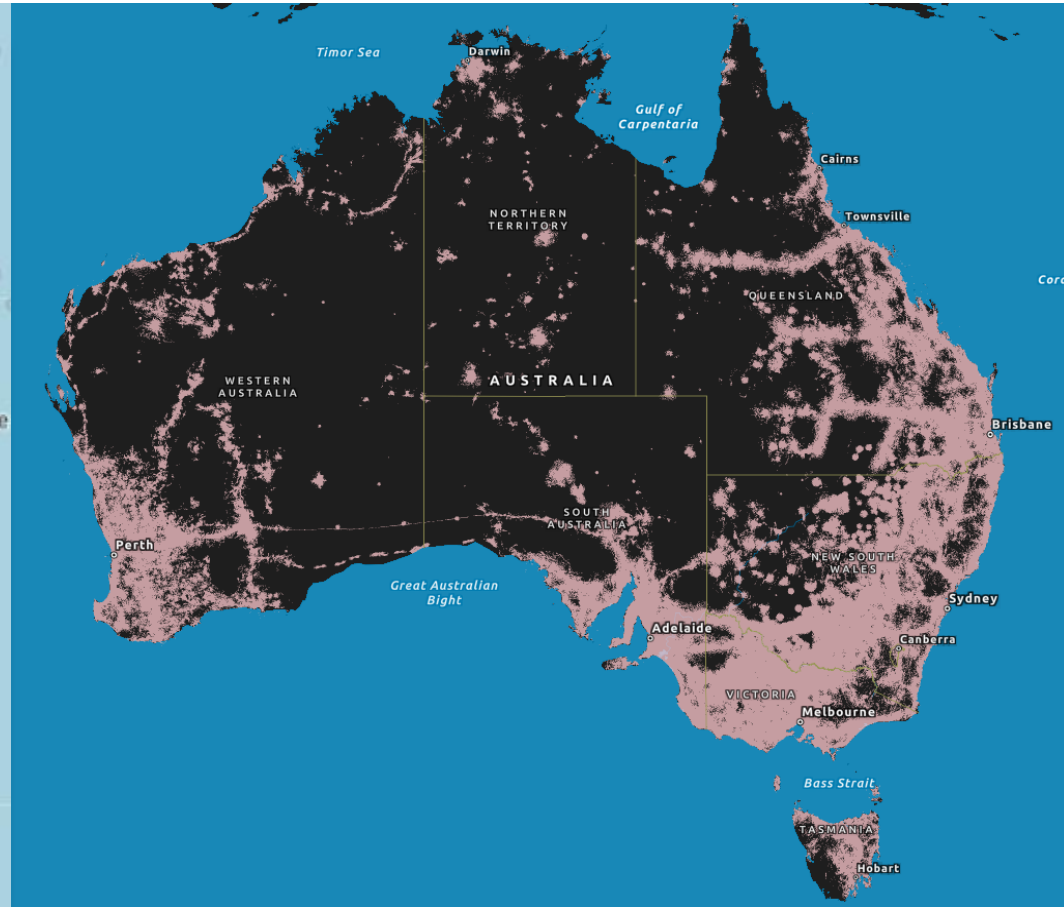




# National Context



Population Map (2020)  
Source: ABS



Mobile Coverage Map (2023)  
Source: DITRDCA / ACCC

- Mobile coverage of Australia's population is comprehensive however very large parts of Australia remain without coverage
- To meet the coverage challenge, PSMB must combine complementary elements to provide data to PSAs wherever and whenever they need it



# What does PSMB aim to deliver?

## 1. Prioritisation of PSMB traffic

- PSMB user traffic is prioritised over commercial user traffic lessening the impact of network congestion (*Note: Triple Zero calling remains highest priority*)

## 2. Multi-Carrier Network Roaming

- Allowing PSMB users to roam between commercial mobile networks maximises coverage and increases resilience by allowing users to fall-back to other networks when outages are encountered on any single network

## 3. Interoperability between agencies, jurisdictions and networks

- Public safety agencies can better communicate with each other, assist interstate jurisdictions and communicate with LMR users and vice-versa

## 4. Coverage Augmentation (Deployables and Satellite VaaN)

- PSMB mobile assets allow for coverage to be deployed, as directed by PSAs, in areas where there is no permanent coverage or for coverage to be restored during an outage
- Satellite Vehicle as a Node allows PSAs to take their coverage with them

## 5. Network of Networks

- PSMB maximises coverage by incorporating multiple types of connectivity, for example satellite networks

## 6. Network Transparency

- PSMB users have a live view of the status of broadband connectivity and hazards that may compromise the network

## 7. Increased Security

- Greater control over the design of the solution allows for increased security for PSMB user traffic

## 8. Hardening and Network Expansion (Future)

- PSMB is hardened against outages, increasing resilience, network availability and is expanded to increase reach





# PSMB Solution



The PSMB solution aims to utilise existing infrastructure and capability whilst uplifting service to PSA grade and partnering with organisations best equipped to deliver to PSA needs

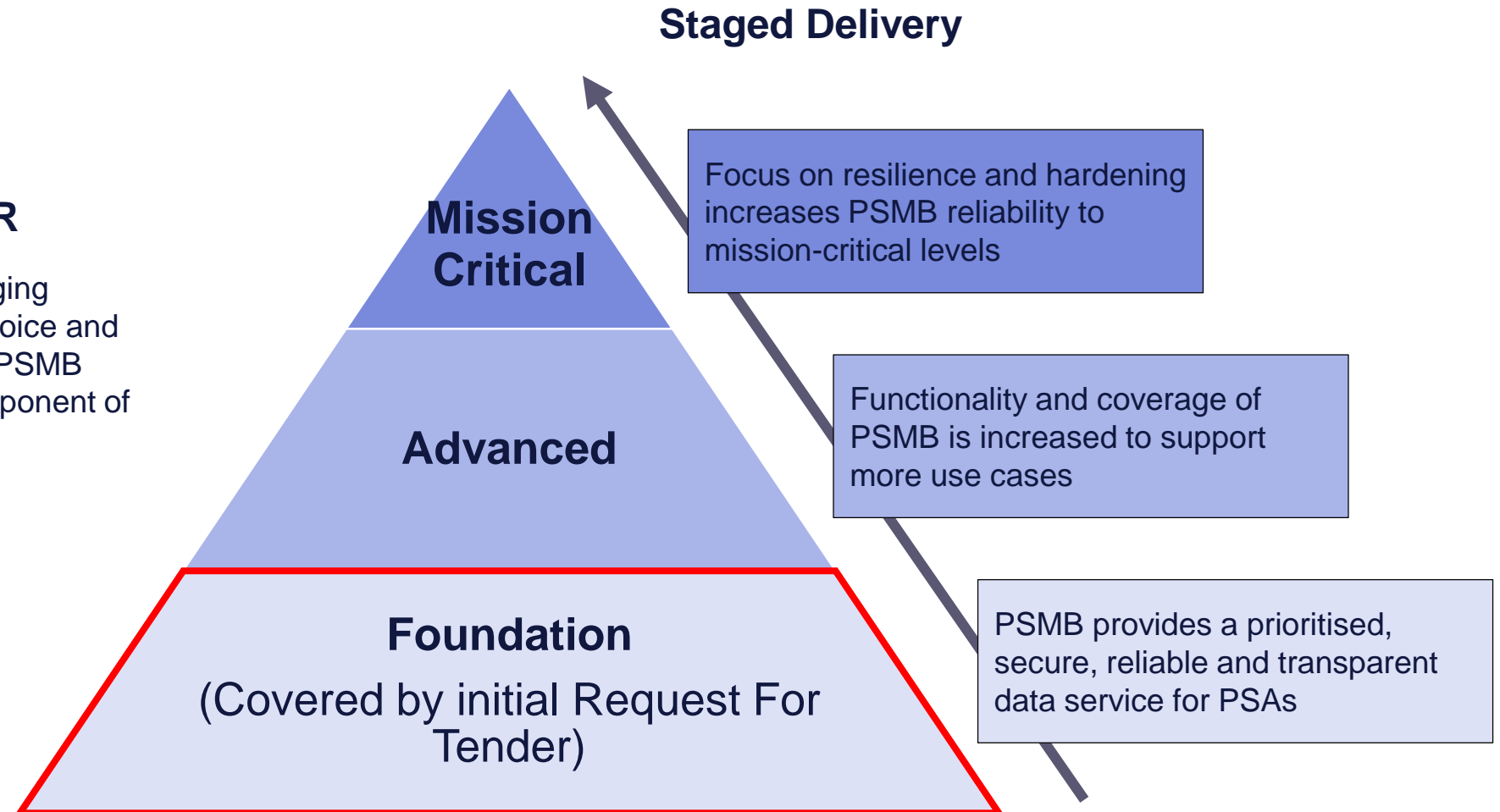
## Solution Elements

- Partially Dedicated PSMB Core
- Access to coverage from multiple MNOs
- PSA-Grade Service and Network Management
- Interworking
- Deployables
- Satellite Vehicle as a Node (VaaN)
- MCx

# Delivery Approach

## Complementary to LMR

Land Mobile Radio (LMR) and Paging networks will continue to provide voice and messaging communications, with PSMB providing the broadband data component of operational communications



# Targeted Industry Engagement June-Aug 2025

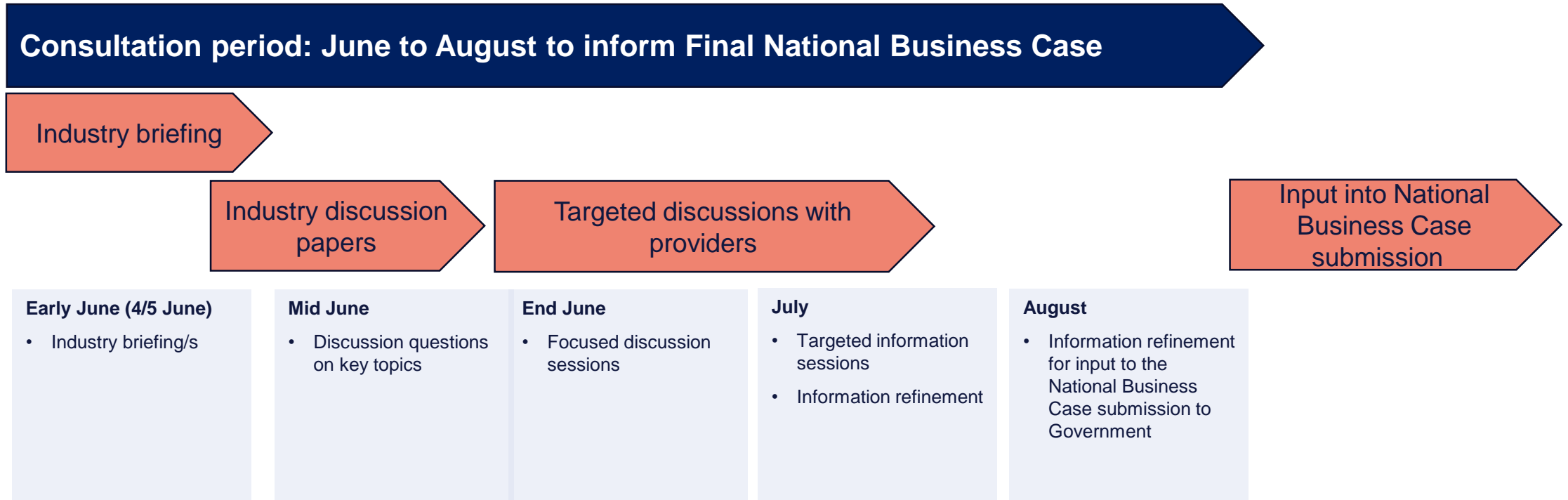
## Purpose

- To improve/strengthen information for the Final National Business Case for Australian Government consideration

Jun 2025

Aug 25

Oct 25



# Ongoing Engagement

- Industry
  - June-August targeted engagement to inform the National PSMB Business Case, starting with satellite services and deployable mobile coverage
  - October onwards – on-going engagement as relevant
- International
- Commonwealth Agencies, States & Territories



## Next Steps

### ➤ Industry engagement

- Wednesday 4 and Thursday 5 June - Industry briefings (today)
- Focus area questions for consideration starting with **satellite services**, followed by **deployable mobile coverage**

### WC 9 June

- **Satellite services** questions for consideration to be sent via email to those who nominate via [psmb@nema.gov.au](mailto:psmb@nema.gov.au). The questions will also be available on the NEMA website.
- Requests for participation in 1:1 discussions via [psmb@nema.gov.au](mailto:psmb@nema.gov.au)

### WC 16 June

- Targeted discussions\* on **satellite services to be held with relevant providers** (register via [psmb@nema.gov.au](mailto:psmb@nema.gov.au))

***Note: Responses to questions can be in discussions set up with NEMA or via email to [psmb@nema.gov.au](mailto:psmb@nema.gov.au). Please only respond to relevant questions. We are not expecting responses to all questions.***

*\*discussions are commercial-in-confidence*





## Next Steps

### ➤ Industry engagement contd.

#### Late June

- Focus area questions for consideration - **deployable mobile coverage**.  
Questions for consideration to be sent via email to those who nominate via [psmb@nema.gov.au](mailto:psmb@nema.gov.au).  
The questions will also be available on the NEMA website.

#### Mid July

- Targeted discussions\* on **deployable mobile coverage services to be held with relevant providers**.
- The focus is on information that can support the PSMB National Business Case.
- Requests for participation in 1:1 discussions via [psmb@nema.gov.au](mailto:psmb@nema.gov.au)

***Note: Response to questions can be in discussions set up with NEMA or via the [psmb@nema.gov.au](mailto:psmb@nema.gov.au) email. Please only respond to relevant questions. We are not expecting responses to all questions.***

*\*discussions are commercial-in-confidence*

August - on-going discussions for input into the National PSMB Business Case.



# Questions?